

# Anti-Aldolase 兔多克隆抗体

K1333822 -20°C



## 产品信息

蛋白质全称	果糖二磷酸醛缩酶 A
别名	Aldolase 1, Muscle-type aldolase, Aldoa, Aldo1, Aldolase A, Fructose 1 6 bisphosphate triosephosphate lyase, GSD12, Lung cancer antigen NY LU 1
免疫原	小鼠 Aldolase 重组蛋白
Uniprot ID	P05064
抗体亚型	IgG
纯化方式	亲和纯化
预测分子量 / 观测分子量	39 kDa / 39 kDa

## 应用

### WB 免疫印迹

物种: 人, 小鼠, 大鼠

稀释比: 1: 500-1: 1000

阳性样品: 胰腺

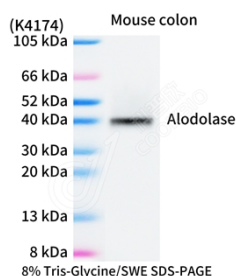
## 背景

Aldolase A (fructose bisphosphate aldolase) is a glycolytic enzyme that catalyzes the reversible conversion of fructose-1,6-bisphosphate to glyceraldehyde 3 phosphate and dihydroxyacetone phosphate. Three aldolase isozymes (A, B, and C), encoded by three different genes, are differentially expressed during development. Aldolase A is found in the developing embryo and is produced in even greater amounts in adult muscle.

## 储存条件

**储存条件:** 自收到之日起 -20°C下储存一年, 避免反复冻融。  
**储存缓冲液:** 含 0.15% ProClin300 防腐剂, 100 µg/mL 牛血清白蛋白和 50%甘油的磷酸盐缓冲液。

## 图像



WB 检测 Aldolase 蛋白(货号 K1333822).  
 样品: 经 RIPA 裂解液(货号 KSG2002)处理的蛋白质.  
 封闭: 3%脱脂牛奶(货号 KSGC310001)溶于 TBST 溶液, 室温孵育 1 小时.  
 一抗: 1: 1000 稀释, 4°C 孵育过夜.  
 二抗: HRP 标记山羊抗兔 IgG (H+L) (货号 KB69909), 1: 5000 稀释, 室温孵育 1 小时.

For Research Use Only!

Ver. No.: V1-202603