

Anti-MRPS22 兔多克隆抗体

K1334098 -20°C



产品信息

蛋白质全称	线粒体 28S 核糖体蛋白 S22
别名	MRP-S22, S22mt, Mrps22, Rpms22, C3orf5, COXPD5, GIBT, GK002
免疫原	KLH 偶联的小鼠 MRPS22 合成肽
Uniprot ID	Q9CXW2
抗体亚型	IgG
纯化方式	亲和纯化
亚细胞定位	线粒体
预测分子量 / 观测分子量	41 kDa / 41 kDa

应用

WB 免疫印迹

物种: 小鼠, 大鼠
 稀释比: 1: 500-1: 1000
 阳性样品: 心

ICC/IF 免疫细胞化学/免疫荧光

物种: 小鼠
 稀释比: 1: 50-1: 200
 阳性样品:

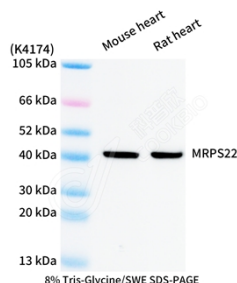
背景

MRPS22, also named as C3orf5, RPMS22 and S22mt, is a component of the mitochondrial ribosome small subunit (28S) which comprises a 12S rRNA and about 30 distinct proteins. Defects in MRPS22 are the cause of combined oxidative phosphorylation deficiency type 5 (COXPD5). MRPS22 is a 360-amino-acid protein that has been found in a limited number of species, having no ortholog in fungi or prokaryotes. The exact location of MRPS22 in the three dimensional structure of the ribosome and its exact function are currently unknown.

储存条件

储存条件: 自收到之日起 -20°C下储存一年, 避免反复冻融。
储存缓冲液: 含 0.15% ProClin300 防腐剂, 100 µg/mL 牛血清白蛋白和 50%甘油的磷酸盐缓冲液。

图像



WB 检测 MRPS22 蛋白(货号 K1334098).
 样品: 经 RIPA 裂解液(货号 KSG2002)处理的蛋白质.
 封闭: 3%脱脂牛奶(货号 KSGC310001)溶于 TBST 溶液, 室温孵育 1 小时.
 一抗: 1: 1000 稀释, 4°C 孵育过夜.
 二抗: HRP 标记山羊抗兔 IgG (H+L) (货号 KB69909), 1: 5000 稀释, 室温孵育 1 小时.

For Research Use Only!

Ver. No.: V1-202603