

Anti-CXCL16 兔多克隆抗体

K1334323 -20°C



产品信息

蛋白质全称	C-X-C 基序趋化因子 16
别名	Scavenger receptor for phosphatidylserine and oxidized low density lipoprotein, Srpsox, SR-PSOX, Small-inducible cytokine B16, Transmembrane chemokine CXCL16, Cxcl16
免疫原	小鼠 CXCL16 重组蛋白
Uniprot ID	Q8BSU2
抗体亚型	IgG
纯化方式	亲和纯化
预测分子量 / 观测分子量	27 kDa / 28-35 kDa

应用

WB 免疫印迹

物种：小鼠，大鼠

稀释比：1: 500-1: 1000

阳性样品：肺

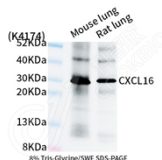
背景

CXCL16 belongs to the CXC chemokine family, which is synthesised in plasmacytoid dendritic cell as a transmembrane molecule. It exists in a transmembrane and soluble form. The transmembrane form of CXCL16 functions as an adhesion molecule for CXCR6-expressing cells, whereas the soluble form of CXCL16 mediates infiltration of circulating cells into sites of injury. CXCL16, has been proposed as an important pathogenic mediator in inflammatory diseases, including rheumatoid arthritis, glomerulonephritis, or prostate cancer.

储存条件

储存条件：自收到之日起 -20°C下储存一年，避免反复冻融。
储存缓冲液：含 0.15% ProClin300 防腐剂, 100 µg/mL 牛血清白蛋白和 50%甘油的磷酸盐缓冲液。

图像



WB 检测 CXCL16 蛋白(货号 K1334323).
 样品: 经 RIPA 裂解液(货号 KSG2002)处理的蛋白质.
 封闭: 3%脱脂牛奶(货号 KSGC310001)溶于 TBST 溶液,
 室温孵育 1 小时.
 一抗: 1: 1000 稀释, 4°C 孵育过夜.
 二抗: HRP 标记山羊抗兔 IgG (H+L) (货号 KB69909), 1:
 5000 稀释, 室温孵育 1 小时.

For Research Use Only!

Ver. No.: V1-202603