

Anti-MMP2 兔多克隆抗体

K1334521 -20°C



产品信息

蛋白质全称	基质金属蛋白酶-2
别名	MMP2, CLG4, CLG4A, MMP-2, MMP-II, MONA, TBE-1, matrix metalloproteinase 2
免疫原	KLH 偶联的小鼠 MMP2 合成肽
Uniprot ID	P33434
抗体亚型	IgG
纯化方式	亲和纯化
预测分子量 / 观测分子量	74 kDa / 69 (mature) kDa

应用

WB 免疫印迹

物种：人, 小鼠

稀释比：1: 500-1: 1000

阳性样品：Hep G2 细胞

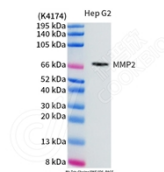
背景

Proteins of the matrix metalloproteinase (MMP) family are involved in the breakdown of extracellular matrix (ECM) in normal physiological processes, such as embryonic development, reproduction, and tissue remodeling, as well as in disease processes, such as arthritis and metastasis. Most MMP's are secreted as inactive proproteins which are activated when cleaved by extracellular proteinases. This gene encodes an enzyme which degrades type IV collagen, the major structural component of basement membranes. The enzyme plays a role in endometrial menstrual breakdown, regulation of vascularization and the inflammatory response.

储存条件

储存条件：自收到之日起 -20°C 下储存一年，避免反复冻融。
储存缓冲液：含 0.15% ProClin300 防腐剂, 100 μg/mL 牛血清白蛋白和 50% 甘油的磷酸盐缓冲液。

图像



WB 检测 MMP2 蛋白 (货号 K1334521).
 样品：经 RIPA 裂解液 (货号 KSG2002) 处理的蛋白质。
 封闭：3% 脱脂牛奶 (货号 KSGC310001) 溶于 TBST 溶液，室温孵育 1 小时。
 一抗：1: 1000 稀释，4°C 孵育过夜。
 二抗：HRP 标记山羊抗兔 IgG (H+L) (货号 KB69909), 1: 5000 稀释，室温孵育 1 小时。

For Research Use Only!

Ver. No.: V1-202603