

Anti-Rad6 兔多克隆抗体

K1334617 -20°C



产品信息

蛋白质全称	泛素结合酶 E2A
别名	E2 ubiquitin-conjugating enzyme A, RAD6 homolog A, HR6A, mHR6A, Ubiquitin carrier protein A, Ubiquitin-protein ligase A, Ube2a, Rad6a
免疫原	小鼠 Rad6 重组蛋白
Uniprot ID	Q9Z255
抗体亚型	IgG
纯化方式	亲和纯化
亚细胞定位	晚期内体, 溶酶体
预测分子量 / 观测分子量	17 kDa / 17 kDa

应用

WB 免疫印迹

物种: 人, 小鼠, 大鼠
 稀释比: 1: 500-1: 1000
 阳性样品: 海马区

ICC/IF 免疫细胞化学/免疫荧光

物种: 人
 稀释比: 1: 300-1: 600
 阳性样品:

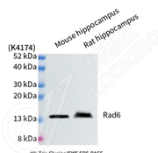
背景

The modification of proteins with ubiquitin is an important cellular mechanism for targeting abnormal or short-lived proteins for degradation. Ubiquitination involves at least three classes of enzymes: ubiquitin-activating enzymes, or E1s, ubiquitin-conjugating enzymes, or E2s, and ubiquitin-protein ligases, or E3s. This gene encodes a member of the E2 ubiquitin-conjugating enzyme family. This enzyme is required for post-replicative DNA damage repair. It plays a critical role in regulating TP53 protein levels under both normal and stress conditions.

储存条件

储存条件: 自收到之日起 -20°C下储存一年, 避免反复冻融。
储存缓冲液: 含 0.15% ProClin300 防腐剂, 100 µg/mL 牛血清白蛋白和 50%甘油的磷酸盐缓冲液。

图像



WB 检测 Rad6 蛋白(货号 K1334617).
 样品: 经 RIPA 裂解液(货号 KSG2002)处理的蛋白质.
 封闭: 3%脱脂牛奶(货号 KSGC310001)溶于 TBST 溶液,
 室温孵育 1 小时.
 一抗: 1: 1000 稀释, 4°C 孵育过夜.
 二抗: HRP 标记山羊抗兔 IgG (H+L) (货号 KB69909), 1:
 5000 稀释, 室温孵育 1 小时.

For Research Use Only!

Ver. No.: V1-202603