

# Anti-FGL2/Prothrombinase 兔多克隆抗体

**K1334761** -20°C


## 产品信息

蛋白质全称	纤维蛋白原样 2 凝血酶原酶
别名	Cytotoxic T-lymphocyte-specific protein, Fibrinogen-like protein 2, Prothrombinase, Fgl2, Fiblp, pT49, T49, fibrinogen like 2
免疫原	小鼠 FGL2/Prothrombinase 重组蛋白
Uniprot ID	P12804
抗体亚型	IgG
纯化方式	亲和纯化
预测分子量 / 观测分子量	49 kDa / 64 kDa

## 应用

### WB 免疫印迹

物种：人  
 稀释比：1: 500-1: 1000  
 阳性样品：Raji 细胞

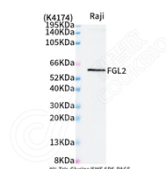
## 背景

FGL2 (fibrinogen like protein 2) is a 70 kDa glycoprotein that belongs to the fibrinogen-related superfamily of proteins which are involved in coagulation, cell adhesion, and transendothelial migration. FGL2 is an important immune regulator of both innate and adaptive response. It is present on the surface of macrophages and endothelial cells, and can be constitutively secreted by CD4+ CD8+ T cell. FGL2 forms a tetrameric complex which is stabilized by interchain disulfide bonds and it exerts immunosuppressive effects on both T cell proliferation and dendritic cell maturation.

## 储存条件

**储存条件：**自收到之日起 -20°C下储存一年，避免反复冻融。  
**储存缓冲液：**含 0.15% ProClin300 防腐剂, 100 µg/mL 牛血清白蛋白和 50%甘油的磷酸盐缓冲液。

## 图像



WB 检测 FGL2/Prothrombinase 蛋白(货号 K1334761).  
 样品：经 RIPA 裂解液(货号 KSG2002)处理的蛋白质。  
 封闭：3%脱脂牛奶(货号 KSGC310001)溶于 TBST 溶液，室温孵育 1 小时。  
 一抗：1: 1000 稀释，4°C 孵育过夜。  
 二抗：HRP 标记山羊抗兔 IgG (H+L) (货号 KB69909), 1: 5000 稀释，室温孵育 1 小时。

**For Research Use Only!**
**Ver. No.: V1-202603**