

Anti-PRKAR2B 兔多克隆抗体

K1335160 -20°C


产品信息

| | |
|---------------|---|
| 蛋白质全称 | cAMP 依赖性蛋白激酶 IIβ 调节亚基 |
| 别名 | Prkar2b, RATDNA, Protein kinase cAMP dependent regulatory type II beta, Pkarb2, H RG363E19.2, RIIbeta |
| 免疫原 | 小鼠 PRKAR2B 重组蛋白 |
| 抗体亚型 | IgG |
| 纯化方式 | 亲和纯化 |
| 预测分子量 / 观测分子量 | 46 kDa / 46 kDa |

应用

WB 免疫印迹

物种：小鼠，大鼠

稀释比：1: 500-1: 1000

阳性样品：脑

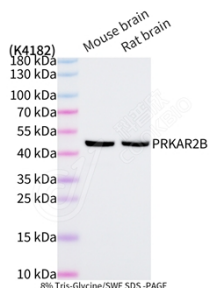
背景

cAMP is a signaling molecule important for a variety of cellular functions. cAMP exerts its effects by activating the cAMP-dependent protein kinase, which transduces the signal through phosphorylation of different target proteins. The inactive kinase holoenzyme is a tetramer composed of two regulatory and two catalytic subunits. cAMP causes the dissociation of the inactive holoenzyme into a dimer of regulatory subunits bound to four cAMP and two free monomeric catalytic subunits. Four different regulatory subunits and three catalytic subunits have been identified in humans. The protein encoded by this gene is one of the regulatory subunits.

储存条件

储存条件：自收到之日起 -20°C 下储存一年，避免反复冻融。
储存缓冲液：含 0.15% ProClin300 防腐剂, 100 μg/mL 牛血清白蛋白和 50% 甘油的磷酸盐缓冲液。

图像



WB 检测 PRKAR2B 蛋白(货号 K1335160).
 样品: 经 RIPA 裂解液(货号 KSG2002)处理的蛋白质.
 封闭: 3% 脱脂牛奶(货号 KSGC310001)溶于 TBST 溶液, 室温孵育 1 小时.
 一抗: 1: 1000 稀释, 4°C 孵育过夜.
 二抗: HRP 标记山羊抗兔 IgG (H+L) (货号 KB69909), 1: 5000 稀释, 室温孵育 1 小时.

For Research Use Only!
Ver. No.: V1-202603