

Anti-Galectin 8/Gal-8 兔多克隆抗体

K1334971 -20°C



产品信息

蛋白质全称	半乳糖凝集素-8
别名	Gal-8, LGALS-8, Lgals8, Lectin galactoside binding soluble 8, Po66 carbohydrate-binding protein, Po66-CBP, Prostate carcinoma tumor antigen 1
免疫原	小鼠 Galectin 8/Gal-8 重组蛋白
Uniprot ID	Q9JL15
抗体亚型	IgG
纯化方式	亲和纯化
亚细胞定位	细胞质

应用

IHC/IF 免疫组织化学/免疫荧光

物种: 小鼠, 大鼠

稀释比: 1: 500-1: 2000

阳性样品: 脑

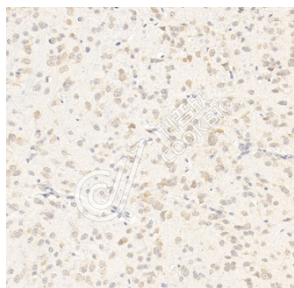
背景

This gene encodes a member of the galectin family. Galectins are beta-galactoside-binding animal lectins with conserved carbohydrate recognition domains. The galectins have been implicated in many essential functions including development, differentiation, cell-cell adhesion, cell-matrix interaction, growth regulation, apoptosis, and RNA splicing. This gene is widely expressed in tumoral tissues and seems to be involved in integrin-like cell interactions. Alternatively spliced transcript variants encoding different isoforms have been identified.

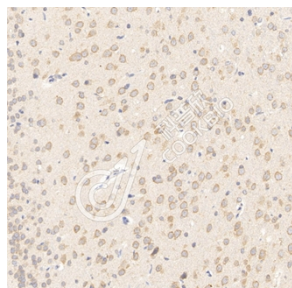
储存条件

储存条件: 自收到之日起 -20°C下储存一年, 避免反复冻融。
储存缓冲液: 含 0.15% ProClin300 防腐剂, 100 µg/mL 牛血清白蛋白和 50%甘油的磷酸盐缓冲液。

图像



IHC 检测 Galectin 8/Gal-8 蛋白(货号 K1334971).
 样品: 小鼠脑, 4%多聚甲醛(货号 KSG1101) 固定 12-24 小时.
 抗原修复: 柠檬酸抗原修复液(干粉, pH 6.0) (KSG1201), 98°C, 20 分钟.
 一抗: 1: 1300 稀释, 4°C 孵育过夜.
 二抗: S-vision 免疫组化多聚二抗(山羊抗兔), 即用型 (货号 KB3906), 室温孵育 20 分钟.



IHC 检测 Galectin 8/Gal-8 蛋白(货号 K1334971).
 样品: 大鼠脑, 4%多聚甲醛(货号 KSG1101) 固定 12-24 小时.
 抗原修复: 柠檬酸抗原修复液(干粉, pH 6.0) (KSG1201), 98°C, 20 分钟.
 一抗: 1: 1300 稀释, 4°C 孵育过夜.
 二抗: S-vision 免疫组化多聚二抗(山羊抗兔), 即用型 (货号 KB3906), 室温孵育 20 分钟.

For Research Use Only!

Ver. No.: V1-202603