

Anti-Hsp20 兔多克隆抗体

K1335109 -20°C


产品信息

蛋白质全称	热休克蛋白β-6
别名	HspB6, Hspb6, Gm479, Heat-shock 27-KD protein 6, HEL55, Hsp20, epididymis luminal protein 55
免疫原	小鼠 Hsp20 重组蛋白
Uniprot ID	Q5EBG6
抗体亚型	IgG
纯化方式	亲和纯化
预测分子量 / 观测分子量	18 kDa / 18 kDa

应用

WB 免疫印迹

物种: 小鼠, 大鼠

稀释比: 1: 500-1: 1000

阳性样品: 骨骼肌, 心

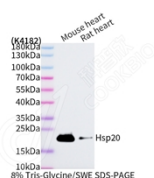
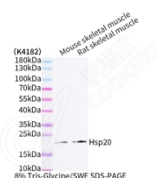
背景

HSPB6 is associated with actin and modulates smooth muscle relaxation. This locus encodes a heat shock protein. The encoded protein likely plays a role in smooth muscle relaxation. Small heat shock protein which functions as a molecular chaperone probably maintaining denatured proteins in a folding-competent state. Seems to have versatile functions in various biological processes. Plays a role in regulating muscle function such as smooth muscle vasorelaxation and cardiac myocyte contractility. May regulate myocardial angiogenesis implicating KDR.

储存条件

储存条件: 自收到之日起 -20°C下储存一年, 避免反复冻融。
储存缓冲液: 含 0.15% ProClin300 防腐剂, 100 μg/mL 牛血清白蛋白和 50%甘油的磷酸盐缓冲液。

图像



WB 检测 Hsp20 蛋白(货号 K1335109).
 样品: 经 RIPA 裂解液(货号 KSG2002)处理的蛋白质.
 封闭: 3%脱脂牛奶(货号 KSGC310001)溶于 TBST 溶液, 室温孵育 1 小时.
 一抗: 1: 1000 稀释, 4°C 孵育过夜.
 二抗: HRP 标记山羊抗兔 IgG (H+L) (货号 KB69909), 1: 5000 稀释, 室温孵育 1 小时.

WB 检测 Hsp20 蛋白(货号 K1335109).
 样品: 经 RIPA 裂解液(货号 KSG2002)处理的蛋白质.
 封闭: 3%脱脂牛奶(货号 KSGC310001)溶于 TBST 溶液, 室温孵育 1 小时.
 一抗: 1: 1000 稀释, 4°C 孵育过夜.
 二抗: HRP 标记山羊抗兔 IgG (H+L) (货号 KB69909), 1: 5000 稀释, 室温孵育 1 小时.

For Research Use Only!
Ver. No.: V1-202603