

# Anti-HP1 gamma/CBX3 兔多克隆抗体

**K1335190** -20°C


## 产品信息

蛋白质全称	染色盒同源蛋白 3
别名	Heterochromatin protein 1 homolog gamma, HP1 gamma, M32, Modifier 2 protein, Cbx3, HECH, HP1Hs gamma
免疫原	KLH 偶联的小鼠 HP1 gamma/CBX3 合成肽
Uniprot ID	P23198
抗体亚型	IgG
纯化方式	亲和纯化
预测分子量 / 观测分子量	21 kDa / 21 kDa

## 应用

### WB 免疫印迹

物种：人，小鼠，大鼠

稀释比：1: 500-1: 1000

阳性样品：睾丸

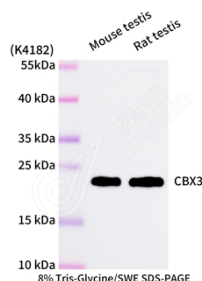
## 背景

The family of Heterochromatin protein 1 (HP1) proteins is a family of highly conserved heterochromatin-associated non-histone chromosomal proteins, which has important functions in nucleus. These functions include gene activation or repression, regulation of binding of cohesion complexes to centromere, sequestration of genes to nuclear periphery, and heterochromatin formation and propagation. Much evidence shows that HP1 proteins interact with numerous proteins including methylated histones, histone methyltransferases and so on. CBX3 is one of the paralogs of HP1 proteins.

## 储存条件

**储存条件：**自收到之日起 -20°C下储存一年，避免反复冻融。  
**储存缓冲液：**含 0.15% ProClin300 防腐剂, 100 μg/mL 牛血清白蛋白和 50%甘油的磷酸盐缓冲液。

## 图像



WB 检测 HP1 gamma/CBX3 蛋白(货号 K1335190).  
 样品: 经 RIPA 裂解液(货号 KSG2002)处理的蛋白质.  
 封闭: 3%脱脂牛奶(货号 KSGC310001)溶于 TBST 溶液,  
 室温孵育 1 小时.  
 一抗: 1: 1000 稀释, 4°C 孵育过夜.  
 二抗: HRP 标记山羊抗兔 IgG (H+L) (货号 KB69909), 1:  
 5000 稀释, 室温孵育 1 小时.

**For Research Use Only!**
**Ver. No.: V1-202603**