

# Anti-MRPL15 兔多克隆抗体

**K1335202** -20°C


## 产品信息

蛋白质全称	线粒体 39S 核糖体蛋白 L15
别名	L15mt, MRP-L15, Mrpl15, RPML7, HSPC145, MRP L7
免疫原	KLH 偶联的小鼠 MRPL15 合成肽
Uniprot ID	Q9CPR5
抗体亚型	IgG
纯化方式	亲和纯化
预测分子量 / 观测分子量	34 kDa / 34 kDa

## 应用

### WB 免疫印迹

物种：人  
 稀释比：1: 500-1: 1000  
 阳性样品：293T 细胞

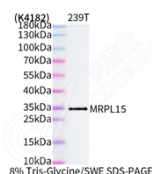
## 背景

This gene encodes a 39S subunit protein that belongs to the EcoL15 ribosomal protein family. Mitochondrial ribosomes (mitoribosomes) consist of a small 28S subunit and a large 39S subunit. They have an estimated 75% protein to rRNA composition compared to prokaryotic ribosomes, where this ratio is reversed. Another difference between mammalian mitoribosomes and prokaryotic ribosomes is that the latter contain a 5S rRNA. Among different species, the proteins comprising the mitoribosome differ greatly in sequence, and sometimes in biochemical properties, which prevents easy recognition by sequence homology.

## 储存条件

**储存条件：**自收到之日起 -20°C 下储存一年，避免反复冻融。  
**储存缓冲液：**含 0.15% ProClin300 防腐剂, 100 μg/mL 牛血清白蛋白和 50% 甘油的磷酸盐缓冲液。

## 图像



WB 检测 MRPL15 蛋白(货号 K1335202).  
 样品: 经 RIPA 裂解液(货号 KSG2002)处理的蛋白质.  
 封闭: 3%脱脂牛奶(货号 KSGC310001)溶于 TBST 溶液,  
 室温孵育 1 小时.  
 一抗: 1: 1000 稀释, 4°C 孵育过夜.  
 二抗: HRP 标记山羊抗兔 IgG (H+L) (货号 KB69909), 1:  
 5000 稀释, 室温孵育 1 小时.

**For Research Use Only!**
**Ver. No.: V1-202603**