

# Anti-RPS10 兔多克隆抗体

K1335514 -20°C



## 产品信息

蛋白质全称	40S 核糖体蛋白 S10
别名	Rps10, DBA9, S10, ribosomal protein S10
免疫原	小鼠 RPS10 重组蛋白
Uniprot ID	P63325, P63326
抗体亚型	IgG
纯化方式	亲和纯化
亚细胞定位	细胞质, 细胞核, 核仁
预测分子量 / 观测分子量	19 kDa / 19 kDa

## 应用

### WB 免疫印迹

物种: 小鼠, 大鼠  
 稀释比: 1: 500-1: 1000  
 阳性样品:

### ICC/IF 免疫细胞化学/免疫荧光

物种: 人, 小鼠  
 稀释比: 1: 100-1: 400  
 阳性样品: NIH3T3 细胞

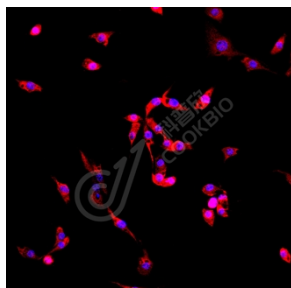
## 背景

Ribosomes, the organelles that catalyze protein synthesis, are composed of a small subunit (40S) and a large subunit (60S) that consist of over 80 distinct ribosomal proteins. Mammalian ribosomal proteins are encoded by multigene families that contain processed pseudogenes and one functional intron-containing gene within their coding regions. Ribosomal Protein S10 (RPS10) is a 165 amino acid component of the small ribosomal 40S subunit. While generally found in the cytoplasm, RPS10 can localize to the granular component (GC) region of the nucleolus. For this to occur, methylation by PRMT5 is required as well as an interaction with NPS1. Defects in RPS10 are the cause of Diamond-Blackfan anemia type 9 (DBA9).

## 储存条件

**储存条件:** 自收到之日起 -20°C下储存一年, 避免反复冻融。  
**储存缓冲液:** 含 0.15% ProClin300 防腐剂, 100 μg/mL 牛血清白蛋白和 50%甘油的磷酸盐缓冲液。

## 图像



ICC 检测 RPS10 蛋白(货号 K1335514)(红色)  
 样品: NIH3T3 细胞, 4%多聚甲醛 (货号 KSG1101) 固定 20 分钟。  
 封闭: 3% BSA (货号 KSGC305010) 的 PBS 溶液, 室温孵育 30 分钟。  
 一抗: 1: 300 稀释, 4°C 孵育过夜。  
 二抗: Cy3 标记山羊抗兔 IgG (H+L) (货号 KB63909), 1: 300 稀释, 室温孵育 1 小时。

For Research Use Only!

Ver. No.: V1-202603