

# Anti-CHMP1a 兔多克隆抗体

**K1335862** -20°C


## 产品信息

蛋白质全称	带电多泡体蛋白 1a
别名	Chromatin-modifying protein 1a, CHMP1a, Chmp1, hVps46 1, KIAA0047, PCOLN3, PRSM1, Vps46 1
免疫原	小鼠 CHMP1a 重组蛋白
Uniprot ID	Q921W0
抗体亚型	IgG
纯化方式	亲和纯化
预测分子量 / 观测分子量	22 kDa / 27 kDa

## 应用

### WB 免疫印迹

物种：人，小鼠，大鼠

稀释比：1: 500-1: 1000

阳性样品：肾

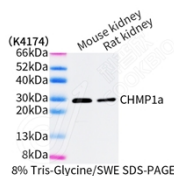
## 背景

Component of the ESCRT-III complex, which is required for multivesicular bodies (MVBs) formation and sorting of endosomal cargo proteins into MVBs. The MVB pathway mediates delivery of transmembrane proteins into the lumen of the lysosome for degradation. The ESCRT-III complex is probably involved in the concentration of MVB cargo. May also be involved in chromosome condensation. Targets the Polycomb group (PcG) protein PCGF4/BMI1 to regions of condensed chromatin. May play a role in stable cell cycle progression and in PcG gene silencing.

## 储存条件

**储存条件：**自收到之日起 -20°C下储存一年，避免反复冻融。  
**储存缓冲液：**含 0.15% ProClin300 防腐剂, 100 μg/mL 牛血清白蛋白和 50%甘油的磷酸盐缓冲液。

## 图像



WB 检测 CHMP1a 蛋白(货号 K1335862).  
 样品: 经 RIPA 裂解液(货号 KSG2002)处理的蛋白质.  
 封闭: 3%脱脂牛奶(货号 KSGC310001)溶于 TBST 溶液,  
 室温孵育 1 小时.  
 一抗: 1: 500 稀释, 4°C 孵育过夜.  
 二抗: HRP 标记山羊抗兔 IgG (H+L) (货号 KB69909), 1:  
 5000 稀释, 室温孵育 1 小时.

**For Research Use Only!**
**Ver. No.: V1-202603**