

Anti-PKC 兔多克隆抗体

K1336753 -20°C



产品信息

蛋白质全称	蛋白激酶 C γ 型
别名	nPKC-epsilon, PKCE, PRKCE, Protein kinase C epsilon type, protein kinase C, epsilon, PKC-gamma, Prkcg, Pkcc, Pkcg, Prkcc, SCA14
免疫原	小鼠 PKC 重组蛋白
Uniprot ID	P63318
抗体亚型	IgG
纯化方式	亲和纯化
亚细胞定位	细胞质, 核周区域, 细胞膜, 细胞突起, 树突

应用

IHC/IF 免疫组织化学/免疫荧光

物种: 小鼠, 大鼠

稀释比: 1: 1000-1: 4000

阳性样品: 脑

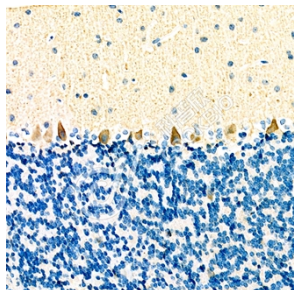
背景

Protein kinase C (PKC) is a family of serine- and threonine-specific protein kinases that can be activated by calcium and second messenger diacylglycerol. PKC family members phosphorylate a wide variety of protein targets and are known to be involved in diverse cellular signaling pathways. PKC also serve as major receptors for phorbol esters, a class of tumor promoters. Each member of the PKC family has a specific expression profile and is believed to play distinct roles in cells. The protein encoded by this gene is one of the PKC family members.

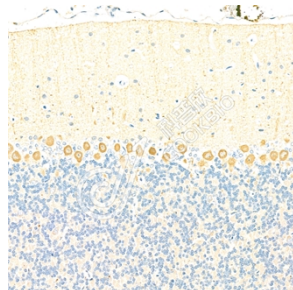
储存条件

储存条件: 自收到之日起 -20°C下储存一年, 避免反复冻融。
储存缓冲液: 含 0.15% ProClin300 防腐剂, 100 μ g/mL 牛血清白蛋白和 50%甘油的磷酸盐缓冲液。

图像



IHC 检测 PKC 蛋白(货号 K1336753).
 样品: 小鼠脑, 4%多聚甲醛 (货号 KSG1101) 固定 12-24 小时.
 抗原修复: 柠檬酸抗原修复液(干粉, pH 6.0) (KSG1201), 98°C, 20 分钟.
 一抗: 1: 2500 稀释, 4°C 孵育过夜.
 二抗: S-vision 免疫组化多聚二抗(山羊抗兔), 即用型 (货号 KB3906), 室温孵育 20 分钟.



IHC 检测 PKC 蛋白(货号 K1336753).
 样品: 大鼠脑, 4%多聚甲醛 (货号 KSG1101) 固定 12-24 小时.
 抗原修复: 柠檬酸抗原修复液(干粉, pH 6.0) (KSG1201), 98°C, 20 分钟.
 一抗: 1: 2500 稀释, 4°C 孵育过夜.
 二抗: S-vision 免疫组化多聚二抗(山羊抗兔), 即用型 (货号 KB3906), 室温孵育 20 分钟.

For Research Use Only!

Ver. No.: V1-202603