

# Anti-JP-2 兔多克隆抗体

K1337122 -20°C



## 产品信息

蛋白质全称	连接蛋白 2
别名	JP-2, Junctophilin type 2, JP2NT, Jph2, Jp2
免疫原	小鼠 JP-2 重组蛋白
Uniprot ID	Q9ET78
抗体亚型	IgG
纯化方式	亲和纯化
亚细胞定位	内质网, 细胞膜, 细胞核
预测分子量 / 观测分子量	75 kDa / 80 kDa

## 应用

### WB 免疫印迹

物种: 小鼠  
 稀释比: 1: 1000-1: 2000  
 阳性样品:

### IHC/IF 免疫组织化学/免疫荧光

物种: 小鼠, 大鼠  
 稀释比: 1: 300-1: 1200  
 阳性样品: 心, 骨骼肌

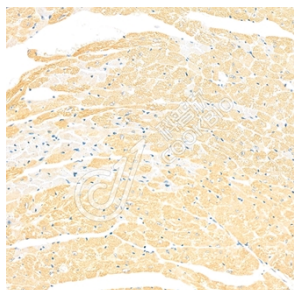
## 背景

Junctional complexes between the plasma membrane and endoplasmic/sarcoplasmic reticulum are a common feature of all excitable cell types and mediate cross talk between cell surface and intracellular ion channels. The protein encoded by this gene is a component of junctional complexes and is composed of a C-terminal hydrophobic segment spanning the endoplasmic/sarcoplasmic reticulum membrane and a remaining cytoplasmic domain that shows specific affinity for the plasma membrane. This gene is a member of the junctophilin gene family. Alternative splicing has been observed at this locus and two variants encoding distinct isoforms are described.

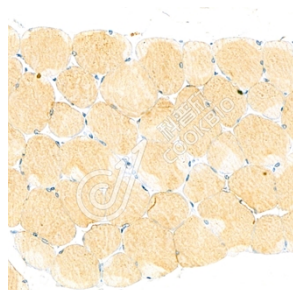
## 储存条件

**储存条件:** 自收到之日起 -20°C下储存一年, 避免反复冻融。  
**储存缓冲液:** 含 0.15% ProClin300 防腐剂, 100 µg/mL 牛血清白蛋白和 50%甘油的磷酸盐缓冲液。

## 图像



IHC 检测 JP-2 蛋白(货号 K1337122).  
 样品: 小鼠心, 4%多聚甲醛 (货号 KSG1101) 固定 12-24 小时.  
 抗原修复: 柠檬酸抗原修复液(干粉, pH 6.0) (KSG1201), 98°C, 20 分钟.  
 一抗: 1: 800 稀释, 4°C 孵育过夜.  
 二抗: S-vision 免疫组化多聚二抗(山羊抗兔), 即用型 (货号 KB3906), 室温孵育 20 分钟.



IHC 检测 JP-2 蛋白(货号 K1337122).  
 样品: 小鼠骨骼肌, 4%多聚甲醛 (货号 KSG1101) 固定 12-24 小时.  
 抗原修复: 柠檬酸抗原修复液(干粉, pH 6.0) (KSG1201), 98°C, 20 分钟.  
 一抗: 1: 800 稀释, 4°C 孵育过夜.  
 二抗: S-vision 免疫组化多聚二抗(山羊抗兔), 即用型 (货号 KB3906), 室温孵育 20 分钟.

For Research Use Only!

Ver. No.: V1-202603