

Anti-WDR13 兔多克隆抗体

K1337806 -20°C



产品信息

蛋白质全称	WD 重复蛋白 13
别名	Wdr13, located at OATL1, MG21
免疫原	小鼠 WDR13 重组蛋白
Uniprot ID	Q91V09
抗体亚型	IgG
纯化方式	亲和纯化
亚细胞定位	细胞核
预测分子量 / 观测分子量	54 kDa / 54 kDa

应用

WB 免疫印迹

物种: 小鼠
 稀释比: 1: 1000-1: 2000
 阳性样品:

IHC/IF 免疫组织化学/免疫荧光

物种: 小鼠, 大鼠
 稀释比: 1: 2500-1: 8000
 阳性样品: 肺

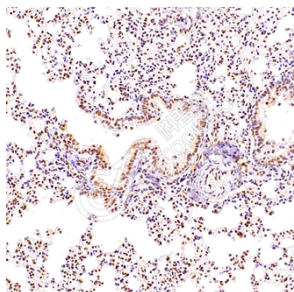
背景

This gene encodes a member of the WD repeat protein family. WD repeats are minimally conserved regions of approximately 40 amino acids typically bracketed by Gly-His and Trp-Asp (GH-WD), which may facilitate formation of heterotrimeric or multiprotein complexes. Members of this family are involved in a variety of cellular processes, including cell cycle progression, signal transduction, apoptosis, and gene regulation. A similar protein in mouse is thought to be a negative regulator of the pancreatic beta cell proliferation. Mice lacking this gene exhibit increased pancreatic islet mass and higher serum insulin levels, and are mildly obese.

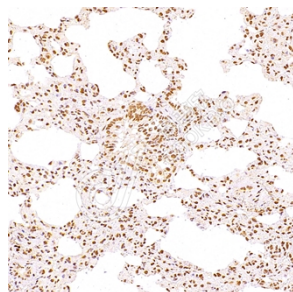
储存条件

储存条件: 自收到之日起 -20°C下储存一年, 避免反复冻融。
储存缓冲液: 含 0.15% ProClin300 防腐剂, 100 µg/mL 牛血清白蛋白和 50%甘油的磷酸盐缓冲液。

图像



IHC 检测 WDR13 蛋白(货号 K1337806).
 样品: 小鼠肺, 4%多聚甲醛 (货号 KSG1101) 固定 12-24 小时.
 抗原修复: Tris-EDTA 抗原修复液(pH 9.0) (KSG1203), 98°C, 20 分钟.
 一抗: 1: 5300 稀释, 4°C 孵育过夜.
 二抗: S-vision 免疫组化多聚二抗(山羊抗兔),即用型 (货号 KB3906), 室温孵育 20 分钟.



IHC 检测 WDR13 蛋白(货号 K1337806).
 样品: 大鼠肺, 4%多聚甲醛 (货号 KSG1101) 固定 12-24 小时.
 抗原修复: Tris-EDTA 抗原修复液(pH 9.0) (KSG1203), 98°C, 20 分钟.
 一抗: 1: 5300 稀释, 4°C 孵育过夜.
 二抗: S-vision 免疫组化多聚二抗(山羊抗兔),即用型 (货号 KB3906), 室温孵育 20 分钟.

For Research Use Only!

Ver. No.: V1-202603