

Anti-Exportin 4/XPO4 兔多克隆抗体

K1337851 -20°C


产品信息

蛋白质全称	转运蛋白 4
别名	Exp4, Xpo4, Kiaa1721
免疫原	小鼠 Exportin 4/XPO4 重组蛋白
Uniprot ID	Q9ESJ0
抗体亚型	IgG
纯化方式	亲和纯化
预测分子量 / 观测分子量	130 kDa / 130 kDa

应用

WB 免疫印迹

物种：小鼠，大鼠

稀释比：1: 1000-1: 2000

阳性样品：C6 细胞, RAW 264.7 细胞

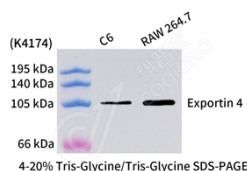
背景

XPO4 belongs to a large family of karyopherins that mediate the transport of proteins and other cargo between the nuclear and cytoplasmic compartments. In the nucleus binds cooperatively to its cargo and to the GTPase Ran in its active GTP-bound form. Docking of this trimeric complex to the nuclear pore complex (NPC) is mediated through binding to nucleoporins. Upon transit of a nuclear export complex into the cytoplasm, disassembling of the complex and hydrolysis of Ran-GTP to Ran-GDP (induced by RANBP1 and RANGAP1, respectively) cause release of the cargo from the export receptor.

储存条件

储存条件：自收到之日起 -20°C下储存一年，避免反复冻融。
储存缓冲液：含 0.15% ProClin300 防腐剂, 100 μg/mL 牛血清白蛋白和 50%甘油的磷酸盐缓冲液。

图像



WB 检测 Exportin 4/XPO4 蛋白(货号 K1337851).
 样品: 经 RIPA 裂解液(货号 KSG2002)处理的蛋白质.
 封闭: 3%脱脂牛奶(货号 KSGC310001)溶于 TBST 溶液,
 室温孵育 1 小时.
 一抗: 1: 1000 稀释, 4°C 孵育过夜.
 二抗: HRP 标记山羊抗兔 IgG (H+L) (货号 KB69909), 1:
 5000 稀释, 室温孵育 1 小时.

For Research Use Only!
Ver. No.: V1-202603