

Anti-POLR1B 兔多克隆抗体

K1337938 -20°C


产品信息

蛋白质全称	RNA 聚合酶 I 亚基 RPA2
别名	RNA polymerase I subunit 2, DNA-directed RNA polymerase I 135 kDa polypeptide, RPA135, Polr1b, Rpa2, Rpo1-2
免疫原	小鼠 POLR1B 重组蛋白
Uniprot ID	P70700
抗体亚型	IgG
纯化方式	亲和纯化
预测分子量 / 观测分子量	128 kDa / 128 kDa

应用

WB 免疫印迹

物种: 人, 小鼠

稀释比: 1: 1000-1: 2000

阳性样品: A-431 细胞

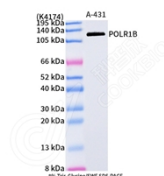
背景

DNA-dependent RNA polymerase catalyzes the transcription of DNA into RNA using the four ribonucleoside triphosphates as substrates. Second largest core component of RNA polymerase I which synthesizes ribosomal RNA precursors. Proposed to contribute to the polymerase catalytic activity and forms the polymerase active center together with the largest subunit. Pol I is composed of mobile elements and RPA2 is part of the core element with the central large cleft and probably a clamp element that moves to open and close the cleft.

储存条件

储存条件: 自收到之日起 -20°C下储存一年, 避免反复冻融。
储存缓冲液: 含 0.15% ProClin300 防腐剂, 100 µg/mL 牛血清白蛋白和 50%甘油的磷酸盐缓冲液。

图像



WB 检测 POLR1B 蛋白(货号 K1337938).
 样品: 经 RIPA 裂解液(货号 KSG2002)处理的蛋白质.
 封闭: 3%脱脂牛奶(货号 KSGC310001)溶于 TBST 溶液,
 室温孵育 1 小时.
 一抗: 1: 1000 稀释, 4°C 孵育过夜.
 二抗: HRP 标记山羊抗兔 IgG (H+L) (货号 KB69909), 1:
 5000 稀释, 室温孵育 1 小时.

For Research Use Only!
Ver. No.: V1-202603