

Anti-PCB 兔多克隆抗体

K1339006 -20°C


产品信息

蛋白质全称	丙酮酸羧化酶 (线粒体)
别名	Pyruvic carboxylase, PCB, Pc, Pcx, pyruvate Carboxylase
免疫原	KLH 偶联的小鼠 PCB 合成肽
Uniprot ID	Q05920
抗体亚型	IgG
纯化方式	亲和纯化
预测分子量 / 观测分子量	130 kDa / 130 kDa

应用

WB 免疫印迹

物种: 人, 小鼠, 大鼠

稀释比: 1: 1000-1: 2000

阳性样品: 海马区

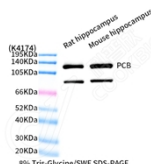
背景

PC(pyruvate carboxylase) is a member of the family of biotin-dependent carboxylases and is found widely among eukaryotic tissues and in many prokaryotic species. It catalyses the ATP-dependent carboxylation of pyruvate to form oxaloacetate which may be utilised in the synthesis of glucose, fat, some amino acids or their derivatives and several neurotransmitters. Diabetes and hyperthyroidism increase the level of expression of pyruvate carboxylase in the long term, while its activity in the short term is controlled by the intramitochondrial concentrations of acetyl-CoA and pyruvate.

储存条件

储存条件: 自收到之日起 -20°C下储存一年, 避免反复冻融。
储存缓冲液: 含 0.15% ProClin300 防腐剂, 100 µg/mL 牛血清白蛋白和 50%甘油的磷酸盐缓冲液。

图像



WB 检测 PCB 蛋白(货号 K1339006).
 样品: 经 RIPA 裂解液(货号 KSG2002)处理的蛋白质.
 封闭: 3%脱脂牛奶(货号 KSGC310001)溶于 TBST 溶液, 室温孵育 1 小时.
 一抗: 1: 1000 稀释, 4°C 孵育过夜.
 二抗: HRP 标记山羊抗兔 IgG (H+L) (货号 KB69909), 1: 5000 稀释, 室温孵育 1 小时.

For Research Use Only!
Ver. No.: V1-202603