

# Anti-KCNK10 兔多克隆抗体

K1339315 -20°C



## 产品信息

|               |   |
|---------------|---|
| 蛋白质全称         | 钾通道亚家族 K 成员 10                          |
| 别名            | Kcnk10, PPP1R97, TREK-2, TREK2, K2p10.1 |
| 免疫原           | KLH 偶联的小鼠 KCNK10 合成肽                    |
| Uniprot ID    | Q8BUW1                                  |
| 抗体亚型          | IgG                                     |
| 纯化方式          | 亲和纯化                                    |
| 预测分子量 / 观测分子量 | 59 kDa / 59 kDa                         |

## 应用

### WB 免疫印迹

物种：人  
 稀释比：1: 300-1: 600  
 阳性样品：胰腺

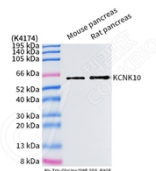
## 背景

The protein encoded by this gene belongs to the family of potassium channel proteins containing two pore-forming P domains. This channel is an open rectifier which primarily passes outward current under physiological K<sup>+</sup> concentrations, and is stimulated strongly by arachidonic acid and to a lesser degree by membrane stretching, intracellular acidification, and general anaesthetics. Several alternatively spliced transcript variants encoding different isoforms have been identified for this gene.

## 储存条件

**储存条件：**自收到之日起 -20°C 下储存一年，避免反复冻融。  
**储存缓冲液：**含 0.15% ProClin300 防腐剂, 100 μg/mL 牛血清白蛋白和 50% 甘油的磷酸盐缓冲液。

## 图像



WB 检测 KCNK10 蛋白(货号 K1339315).  
 样品: 经 RIPA 裂解液(货号 KSG2002)处理的蛋白质.  
 封闭: 3% 脱脂牛奶(货号 KSGC310001)溶于 TBST 溶液,  
 室温孵育 1 小时.  
 一抗: 1: 300 稀释, 4°C 孵育过夜.  
 二抗: HRP 标记山羊抗兔 IgG (H+L) (货号 KB69909), 1:  
 5000 稀释, 室温孵育 1 小时.

For Research Use Only!

Ver. No.: V1-202603