

Anti-MCP1 兔多克隆抗体

K1339717 -20°C


产品信息

蛋白质全称	C-C 基序趋化因子 2
别名	CCL2, GDCF-2, HC11, HSMCR30, MCAF, MCP1, SCYA2, SMC-CF, C-C motif chemokine ligand 2, MCP-1, MCP1
免疫原	KLH 偶联的人 MCP-1 合成肽
Uniprot ID	P13500
抗体亚型	IgG
纯化方式	亲和纯化
预测分子量 / 观测分子量	11 kDa / 11 kDa

应用

WB 免疫印迹

物种：人
 稀释比：1: 500-1: 1000
 阳性样品：THP-1 细胞

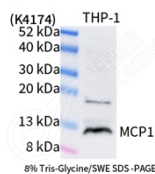
背景

The chemokine (C-C motif) ligand 2 (CCL2) is also referred to as monocyte chemoattractant protein 1 (MCP1) and small inducible cytokine A2. CCL2 is a small cytokine that belongs to the CC chemokine family which is characterized by two adjacent cysteine residues. This cytokine displays chemotactic activity for monocytes and basophils but not for neutrophils or eosinophils. It has been implicated in the pathogenesis of diseases characterized by monocytic infiltrates, like psoriasis, rheumatoid arthritis and atherosclerosis.

储存条件

储存条件：自收到之日起 -20°C 下储存一年，避免反复冻融。
储存缓冲液：含 0.15% ProClin300 防腐剂, 100 μg/mL 牛血清白蛋白和 50% 甘油的磷酸盐缓冲液。

图像



WB 检测 MCP1 蛋白(货号 K1339717).
 样品: 经 RIPA 裂解液(货号 KSG2002)处理的蛋白质.
 封闭: 3%脱脂牛奶(货号 KSGC310001)溶于 TBST 溶液,
 室温孵育 1 小时.
 一抗: 1: 500 稀释, 4°C 孵育过夜.
 二抗: HRP 标记山羊抗兔 IgG (H+L) (货号 KB69909), 1:
 5000 稀释, 室温孵育 1 小时.

For Research Use Only!
Ver. No.: V1-202603