

Anti-DUSP10 兔多克隆抗体

K1339693 -20°C



产品信息

蛋白质全称	双特异性蛋白磷酸酶 10
别名	Mitogen-activated protein kinase phosphatase 5, DUSP10, MAP kinase phosphatase 5, MKP5, MKP-5, Serine/threonine specific protein phosphatase
免疫原	KLH 偶联的小鼠 DUSP10 合成肽
Uniprot ID	Q9ESS0
抗体亚型	IgG
纯化方式	亲和纯化
预测分子量 / 观测分子量	53 kDa / 53 kDa

应用

WB 免疫印迹

物种: 人, 小鼠
 稀释比: 1: 500-1: 1000
 阳性样品: Hep G2 细胞

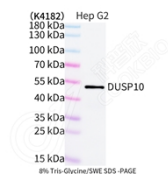
背景

Dual specificity protein phosphatases inactivate their target kinases by dephosphorylating both the phosphoserine/threonine and phosphotyrosine residues. They negatively regulate members of the MAP kinase superfamily, which is associated with cellular proliferation and differentiation. Different members of this family of dual specificity phosphatases show distinct substrate specificities for MAP kinases, different tissue distribution and subcellular localization, and different modes of expression induction by extracellular stimuli.

储存条件

储存条件: 自收到之日起 -20°C下储存一年, 避免反复冻融。
储存缓冲液: 含 0.15% ProClin300 防腐剂, 100 µg/mL 牛血清白蛋白和 50%甘油的磷酸盐缓冲液。

图像



WB 检测 DUSP10 蛋白(货号 K1339693).
 样品: 经 RIPA 裂解液(货号 KSG2002)处理的蛋白质.
 封闭: 3%脱脂牛奶(货号 KSGC310001)溶于 TBST 溶液,
 室温孵育 1 小时.
 一抗: 1: 1000 稀释, 4°C 孵育过夜.
 二抗: HRP 标记山羊抗兔 IgG (H+L) (货号 KB69909), 1:
 5000 稀释, 室温孵育 1 小时.

For Research Use Only!

Ver. No.: V1-202603