

Anti-OGDHL 兔多克隆抗体

K1339720 -20°C



产品信息

蛋白质全称	2-酮戊二酸脱氢酶样 (线粒体)
别名	KIAA1290, OGDC E1 like, OGDHL, Alpha-ketoglutarate dehydrogenase-like, 2-oxoglutarate dehydrogenase complex component E1-like
免疫原	人 OGDHL 重组蛋白
Uniprot ID	Q9ULD0
抗体亚型	IgG
纯化方式	亲和纯化
预测分子量 / 观测分子量	114 kDa / 114 kDa

应用

WB 免疫印迹

物种: 人, 小鼠, 大鼠

稀释比: 1: 1000-1: 2000

阳性样品: 肾

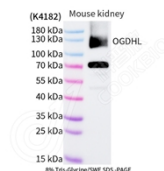
背景

OGDHL(oxoglutarate dehydrogenase-like) is also named as KGDE1KL, FLJ10851, KIAA1290 and belongs to the alpha-ketoglutarate dehydrogenase family. OGDHL is one of the rate-limiting component of the multienzyme OGDH complex (OGDHC) whose malfunction is associated with neuro-degeneration and it is localized only in the mitochondrial fraction and not in the cytosolic or nuclear fractions. OGDHL negatively regulates cell proliferation by inducing apoptosis in cervical cancer cells.

储存条件

储存条件: 自收到之日起 -20°C下储存一年, 避免反复冻融。
储存缓冲液: 含 0.15% ProClin300 防腐剂, 100 µg/mL 牛血清白蛋白和 50%甘油的磷酸盐缓冲液。

图像



WB 检测 OGDHL 蛋白(货号 K1339720).
 样品: 经 RIPA 裂解液(货号 KSG2002)处理的蛋白质.
 封闭: 3%脱脂牛奶(货号 KSGC310001)溶于 TBST 溶液,
 室温孵育 1 小时.
 一抗: 1: 1000 稀释, 4°C 孵育过夜.
 二抗: HRP 标记山羊抗兔 IgG (H+L) (货号 KB69909), 1:
 5000 稀释, 室温孵育 1 小时.

For Research Use Only!

Ver. No.: V1-202603