

# Anti-PSIP1/LEDGF 兔多克隆抗体

K1340413 -20°C



## 产品信息

|            |  |
|------------|--|
| 蛋白质全称      | PC4/SFRS1 互作蛋白   |
| 别名         | CLL associated antigen KW 7, DFS 70, DFS70, LEDGF, p52, p75, PAIP, PSIP1, PSIP2, Lens epithelium-derived growth factor, mLEDGF |
| 免疫原        | 小鼠 PSIP1/LEDGF 重组蛋白  |
| Uniprot ID | Q99JF8   |
| 抗体亚型       | IgG  |
| 纯化方式       | 亲和纯化   |
| 亚细胞定位      | 细胞核  |

## 应用

### IHC/IF 免疫组织化学/免疫荧光

物种: 小鼠, 大鼠

稀释比: 1: 1500-1: 3000

阳性样品: 睾丸

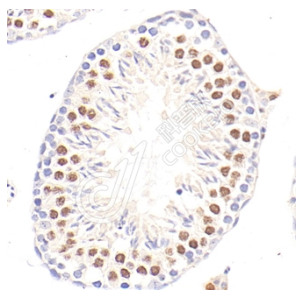
## 背景

Transcriptional coactivator involved in neuroepithelial stem cell differentiation and neurogenesis. Involved in particular in lens epithelial cell gene regulation and stress responses. May play an important role in lens epithelial to fiber cell terminal differentiation. May play a protective role during stress-induced apoptosis. Isoform 2 is a more general and stronger transcriptional coactivator. Isoform 2 may also act as an adapter to coordinate pre-mRNA splicing. Cellular cofactor for lentiviral integration.. This protein has 2 isoforms produced by alternative splicing.

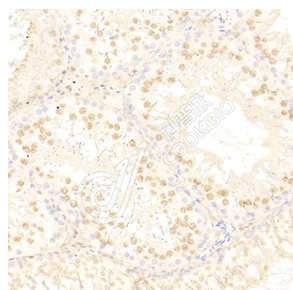
## 储存条件

**储存条件:** 自收到之日起 -20°C下储存一年, 避免反复冻融。  
**储存缓冲液:** 含 0.15% ProClin300 防腐剂, 100 µg/mL 牛血清白蛋白和 50%甘油的磷酸盐缓冲液。

## 图像



IHC 检测 PSIP1/LEDGF 蛋白(货号 K1340413).  
 样品: 小鼠睾丸, 4%多聚甲醛 (货号 KSG1101) 固定 12-24 小时.  
 抗原修复: Tris-EDTA 抗原修复液(pH 9.0) (KSG1203), 98°C, 20 分钟.  
 一抗: 1: 2300 稀释, 4°C 孵育过夜.  
 二抗: S-vision 免疫组化多聚二抗(山羊抗兔), 即用型 (货号 KB3906), 室温孵育 20 分钟.



IHC 检测 PSIP1/LEDGF 蛋白(货号 K1340413).  
 样品: 大鼠睾丸, 4%多聚甲醛 (货号 KSG1101) 固定 12-24 小时.  
 抗原修复: Tris-EDTA 抗原修复液(pH 9.0) (KSG1203), 98°C, 20 分钟.  
 一抗: 1: 2300 稀释, 4°C 孵育过夜.  
 二抗: S-vision 免疫组化多聚二抗(山羊抗兔), 即用型 (货号 KB3906), 室温孵育 20 分钟.

For Research Use Only!

Ver. No.: V1-202603