

Anti-CIKS/ACT1 兔多克隆抗体

K1340440 -20°C



产品信息

蛋白质全称	E3 泛素连接酶 TRAF3IP2
别名	ACT1, Adapter protein CIKS, C6orf2, C6orf4, C6orf5, C6orf6, CIKS, Connection to IKK and SAPK/JNK, TRAF3 interacting protein 2, TRAF3IP2
免疫原	小鼠 CIKS/ACT1 重组蛋白
Uniprot ID	Q8N7N6
抗体亚型	IgG
纯化方式	亲和纯化
亚细胞定位	细胞核, 细胞质, 分泌型

应用

IHC/IF 免疫组织化学/免疫荧光

物种: 大鼠

稀释比: 1: 1800-1: 3600

阳性样品: 脾

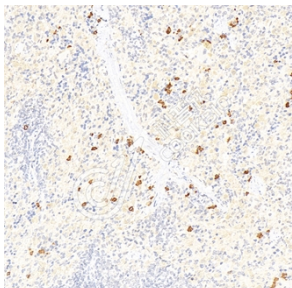
背景

This gene encodes a protein involved in regulating responses to cytokines by members of the Rel/NF-kappaB transcription factor family. These factors play a central role in innate immunity in response to pathogens, inflammatory signals and stress. This gene product interacts with TRAF proteins (tumor necrosis factor receptor-associated factors) and either I-kappaB kinase or MAP kinase to activate either NF-kappaB or Jun kinase. Several alternative transcripts encoding different isoforms have been identified. Another transcript, which does not encode a protein and is transcribed in the opposite orientation, has been identified.

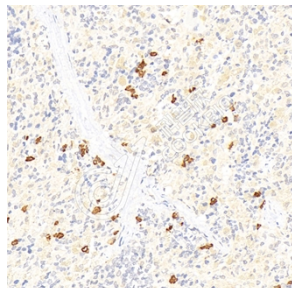
储存条件

储存条件: 自收到之日起 -20°C下储存一年, 避免反复冻融。
储存缓冲液: 含 0.15% ProClin300 防腐剂, 100 µg/mL 牛血清白蛋白和 50%甘油的磷酸盐缓冲液。

图像



IHC 检测 CIKS/ACT1 蛋白(货号 K1340440).
 样品: 大鼠脾, 4%多聚甲醛 (货号 KSG1101) 固定 12-24 小时.
 抗原修复: 柠檬酸抗原修复液(干粉, pH 6.0) (KSG1201), 98°C, 20 分钟.
 一抗: 1: 2700 稀释, 4°C 孵育过夜.
 二抗: S-vision 免疫组化多聚二抗(山羊抗兔), 即用型 (货号 KB3906), 室温孵育 20 分钟.



IHC 检测 CIKS/ACT1 蛋白(货号 K1340440).
 样品: 大鼠脾, 4%多聚甲醛 (货号 KSG1101) 固定 12-24 小时.
 抗原修复: 柠檬酸抗原修复液(干粉, pH 6.0) (KSG1201), 98°C, 20 分钟.
 一抗: 1: 2700 稀释, 4°C 孵育过夜.
 二抗: S-vision 免疫组化多聚二抗(山羊抗兔), 即用型 (货号 KB3906), 室温孵育 20 分钟.

For Research Use Only!

Ver. No.: V1-202603