

Anti-S100A12/CGRP 兔多克隆抗体

K1340449 -20°C



产品信息

蛋白质全称	S100 钙结合蛋白 A12
别名	CAAF1, CAGC, Calgranulin-C, CGRP, EN-RAGE, ENRAGE, MRP6, Neutrophil S100 protein, p6, S100A12
免疫原	人 S100A12/CGRP 重组蛋白
Uniprot ID	P80511
抗体亚型	IgG
纯化方式	亲和纯化
亚细胞定位	细胞膜, 细胞质, 分泌型

应用

IHC/IF 免疫组织化学/免疫荧光

物种: 人
 稀释比: 1: 2000-1: 4000
 阳性样品: 结肠癌, 脾

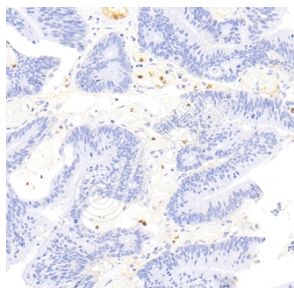
背景

S100A12 is a member of the S100 family of proteins containing 2 EF-hand calcium-binding motifs. S100 proteins are localized in the cytoplasm and/or nucleus of a wide range of cells, and involved in the regulation of a number of cellular processes such as cell cycle progression and differentiation. S100 genes include at least 13 members which are located as a cluster on chromosome 1q21. S100A12 is expressed abundantly in granulocytes, and has been implicated to play an important role on inflammatory reactions in various disease states.

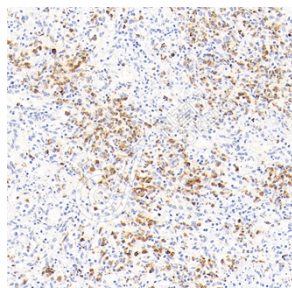
储存条件

储存条件: 自收到之日起 -20°C下储存一年, 避免反复冻融。
储存缓冲液: 含 0.15% ProClin300 防腐剂, 100 µg/mL 牛血清白蛋白和 50%甘油的磷酸盐缓冲液。

图像



IHC 检测 S100A12/CGRP 蛋白(货号 K1340449).
 样品: 人结肠癌, 4%多聚甲醛(货号 KSG1101) 固定 12-24 小时.
 抗原修复: 柠檬酸抗原修复液(干粉, pH 6.0) (KSG1201), 98°C, 20 分钟.
 一抗: 1: 3000 稀释, 4°C 孵育过夜.
 二抗: S-vision 免疫组化多聚二抗(山羊抗兔), 即用型 (货号 KB3906), 室温孵育 20 分钟.



IHC 检测 S100A12/CGRP 蛋白(货号 K1340449).
 样品: 人脾, 4%多聚甲醛(货号 KSG1101) 固定 12-24 小时.
 抗原修复: 柠檬酸抗原修复液(干粉, pH 6.0) (KSG1201), 98°C, 20 分钟.
 一抗: 1: 3000 稀释, 4°C 孵育过夜.
 二抗: S-vision 免疫组化多聚二抗(山羊抗兔), 即用型 (货号 KB3906), 室温孵育 20 分钟.

For Research Use Only!

Ver. No.: V1-202603