

Anti-TLR2 兔多克隆抗体

K1340512 -20°C



产品信息

蛋白质全称	Toll 样受体 2
别名	TLR2, CD282, TIL4, Toll like receptor, Toll/interleukin 1 receptor like protein 4, Toll like receptor 2 precursor
免疫原	KLH 偶联的小鼠 TLR2 合成肽
Uniprot ID	Q9QUN7
抗体亚型	IgG
纯化方式	亲和纯化
预测分子量 / 观测分子量	90 kDa / 90-105 kDa

应用

WB 免疫印迹

物种：小鼠

稀释比：1: 200-1: 500

阳性样品：脾

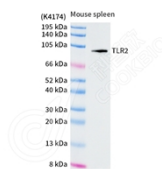
背景

TLR2 is a member of the Toll-like receptor (TLR) family, which plays a fundamental role in pathogen recognition and activation of innate immunity. TLRs are highly conserved from *Drosophila* to humans and share structural and functional similarities, while the various TLRs exhibit different patterns of expression. This gene is expressed most abundantly in peripheral blood leukocytes, and mediates host response to Gram-positive bacteria and yeast via stimulation of NF- κ B. In the intestine, TLR2 regulates the expression of CYP1A1, which is a key enzyme in detoxication of carcinogenic polycyclic aromatic hydrocarbons such as benzo(a)pyrene.

储存条件

储存条件：自收到之日起 -20°C下储存一年，避免反复冻融。
储存缓冲液：含 0.15% ProClin300 防腐剂, 100 μ g/mL 牛血清白蛋白和 50%甘油的磷酸盐缓冲液。

图像



WB 检测 TLR2 蛋白(货号 K1340512).
 样品: 经 RIPA 裂解液(货号 KSG2002)处理的蛋白质.
 封闭: 3%脱脂牛奶(货号 KSGC310001)溶于 TBST 溶液,
 室温孵育 1 小时.
 一抗: 1: 1000 稀释, 4°C 孵育过夜.
 二抗: HRP 标记山羊抗兔 IgG (H+L) (货号 KB69909), 1:
 5000 稀释, 室温孵育 1 小时.

For Research Use Only!

Ver. No.: V1-202603