

Anti-TWF2 兔多克隆抗体

K1340563 -20°C



产品信息

蛋白质全称	双解丝蛋白 2
别名	A6-related protein, mA6RP, Twinfilin-1-like protein, Twf2, Ptk9l, MSTP011, A6RP, A6r
免疫原	小鼠 TWF2 重组蛋白
Uniprot ID	Q9Z0P5
抗体亚型	IgG
纯化方式	亲和纯化
预测分子量 / 观测分子量	39 kDa / 39 kDa

应用

WB 免疫印迹

物种：人，小鼠，大鼠

稀释比：1: 500-1: 1000

阳性样品：U-251 细胞

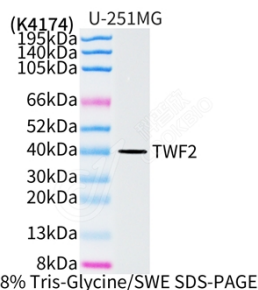
背景

TWF2 (Twinfilin 2) was identified by its interaction with the catalytic domain of protein kinase C zeta. It contains an actin binding site and an ATP binding site and is most closely related to twinfilin (PTK9), a conserved actin monomer binding protein. TWF2 is an actin binding protein involved in motile and morphological processes. It inhibits actin polymerization, likely by sequestering G actin. By capping the barbed ends of filaments, it also regulates motility. It seems to play an important role in clathrin mediated endocytosis and distribution of endocytic organelles.

储存条件

储存条件：自收到之日起 -20°C下储存一年，避免反复冻融。
储存缓冲液：含 0.15% ProClin300 防腐剂, 100 μg/mL 牛血清白蛋白和 50%甘油的磷酸盐缓冲液。

图像



WB 检测 TWF2 蛋白(货号 K1340563).
 样品: 经 RIPA 裂解液(货号 KSG2002)处理的蛋白质.
 封闭: 3%脱脂牛奶(货号 KSGC310001)溶于 TBST 溶液,
 室温孵育 1 小时.
 一抗: 1: 1000 稀释, 4°C 孵育过夜.
 二抗: HRP 标记山羊抗兔 IgG (H+L) (货号 KB69909), 1:
 5000 稀释, 室温孵育 1 小时.

For Research Use Only!

Ver. No.: V1-202603