

Anti-KIRREL 3 兔多克隆抗体

K1340854 -20°C



产品信息

蛋白质全称	Irre 同源样蛋白 3
别名	KIAA1867, KIRRE, KIRREL3, MRD4, NEPH2, Nephrin like protein 2, PRO4502, mKirre, Kin of irregular chiasm-like protein 3
免疫原	小鼠 KIRREL 3 重组蛋白
Uniprot ID	Q8BR86
抗体亚型	IgG
纯化方式	亲和纯化
预测分子量 / 观测分子量	85 kDa / 125 kDa

应用

WB 免疫印迹

物种: 人
 稀释比: 1: 500-1: 1000
 阳性样品: HeLa 细胞

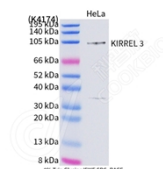
背景

The protein encoded by this gene is a member of the nephrin-like protein family. These proteins are expressed in fetal and adult brain, and also in podocytes of kidney glomeruli. The cytoplasmic domains of these proteins interact with the C-terminus of podocin, also expressed in the podocytes, cells involved in ensuring size- and charge-selective ultrafiltration. The protein encoded by this gene is a synaptic cell adhesion molecule with multiple extracellular immunoglobulin-like domains and a cytoplasmic PDZ domain-binding motif. Mutations in this gene are associated with several neurological and cognitive disorders.

储存条件

储存条件: 自收到之日起 -20°C下储存一年, 避免反复冻融。
储存缓冲液: 含 0.15% ProClin300 防腐剂, 100 µg/mL 牛血清白蛋白和 50%甘油的磷酸盐缓冲液。

图像



WB 检测 KIRREL 3 蛋白(货号 K1340854).
 样品: 经 RIPA 裂解液(货号 KSG2002)处理的蛋白质.
 封闭: 3%脱脂牛奶(货号 KSGC310001)溶于 TBST 溶液,
 室温孵育 1 小时.
 一抗: 1: 1000 稀释, 4°C 孵育过夜.
 二抗: HRP 标记山羊抗兔 IgG (H+L) (货号 KB69909), 1:
 5000 稀释, 室温孵育 1 小时.

For Research Use Only!

Ver. No.: V1-202603