

# Anti-AMCase 兔多克隆抗体

**K1340911 -20°C**


## 产品信息

蛋白质全称	酸性哺乳动物壳多糖酶
别名	Acidic mammalian chitinase, AMCase, CHIA, CHIT2, chitinase, acidic, Lung specific protein TSA1902, RP5 1125M8.1, TSA1902, ECF L
免疫原	小鼠 AMCase 重组蛋白
Uniprot ID	Q91XA9
抗体亚型	IgG
纯化方式	亲和纯化
预测分子量 / 观测分子量	52 kDa / 52 kDa

## 应用

### WB 免疫印迹

物种：人，小鼠，大鼠

稀释比：1: 500-1: 1000

阳性样品：Hep G2 细胞

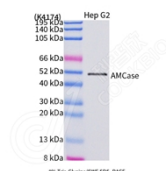
## 背景

Degrades chitin and chitotriose. May participate in the defense against nematodes, fungi and other pathogens. Plays a role in T-helper cell type 2 (Th2) immune response. Contributes to the response to IL-13 and inflammation in response to IL-13. Stimulates chemokine production by pulmonary epithelial cells. Protects lung epithelial cells against apoptosis and promotes phosphorylation of AKT1. Its function in the inflammatory response and in protecting cells against apoptosis is inhibited by allosamidin, suggesting that the function of this protein depends on carbohydrate binding.

## 储存条件

**储存条件：**自收到之日起 -20°C下储存一年，避免反复冻融。  
**储存缓冲液：**含 0.15% ProClin300 防腐剂, 100 μg/mL 牛血清白蛋白和 50%甘油的磷酸盐缓冲液。

## 图像



WB 检测 AMCase 蛋白(货号 K1340911).  
 样品: 经 RIPA 裂解液(货号 KSG2002)处理的蛋白质.  
 封闭: 3%脱脂牛奶(货号 KSGC310001)溶于 TBST 溶液,  
 室温孵育 1 小时.  
 一抗: 1: 1000 稀释, 4°C 孵育过夜.  
 二抗: HRP 标记山羊抗兔 IgG (H+L) (货号 KB69909), 1:  
 5000 稀释, 室温孵育 1 小时.

**For Research Use Only!**
**Ver. No.: V1-202603**