

Anti-RASD2 兔多克隆抗体

K1341538 -20°C



产品信息

蛋白质全称	GTP 酶 Rhes
别名	Ras homolog enriched in striatum, Rasd2, RASD family member 2, TEM2, Tumor endothelial marker 2, Rhes
免疫原	KLH 偶联的小鼠 RASD2 合成肽
Uniprot ID	P63032
抗体亚型	IgG
纯化方式	亲和纯化
预测分子量 / 观测分子量	30 kDa / 30 kDa

应用

WB 免疫印迹

物种：小鼠，大鼠

稀释比：1: 500-1: 1500

阳性样品：肾

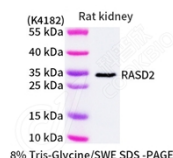
背景

This gene belongs to the Ras superfamily of small GTPases and is enriched in the striatum. The encoded protein functions as an E3 ligase for attachment of small ubiquitin-like modifier (SUMO). This protein also binds to mutant huntingtin (mHtt), the protein mutated in Huntington disease (HD). Sumoylation of mHTT by this protein may cause degeneration of the striatum. The protein functions as an activator of mechanistic target of rapamycin 1 (mTOR1), which in turn plays a role in myelination, axon growth and regeneration. Reduced levels of mRNA expressed by this gene were found in HD patients.

储存条件

储存条件：自收到之日起 -20°C下储存一年，避免反复冻融。
储存缓冲液：含 0.15% ProClin300 防腐剂, 100 μg/mL 牛血清白蛋白和 50%甘油的磷酸盐缓冲液。

图像



WB 检测 RASD2 蛋白(货号 K1341538).
 样品: 经 RIPA 裂解液(货号 KSG2002)处理的蛋白质.
 封闭: 3%脱脂牛奶(货号 KSGC310001)溶于 TBST 溶液,
 室温孵育 1 小时.
 一抗: 1: 1000 稀释, 4°C 孵育过夜.
 二抗: HRP 标记山羊抗兔 IgG (H+L) (货号 KB69909), 1:
 5000 稀释, 室温孵育 1 小时.

For Research Use Only!

Ver. No.: V1-202603