

# Anti-TROVE2/SS-A 兔多克隆抗体

K1341595 -20°C



## 产品信息

蛋白质全称	60kDa SS-A/Ro 核糖核蛋白
别名	60 kDa ribonucleoprotein Ro, 60 kDa Ro protein, Ro 60 kDa autoantigen, RO60, RoRNP, Sjogren syndrome antigen A2, SS A, SSA2, TROVE domain family member 2, TROVE2
免疫原	小鼠 TROVE2 重组蛋白
Uniprot ID	O08848
抗体亚型	IgG
纯化方式	亲和纯化
预测分子量 / 观测分子量	60 kDa / 60 kDa

## 应用

### WB 免疫印迹

物种：人，小鼠

稀释比：1: 1000-1: 2000

阳性样品：脑

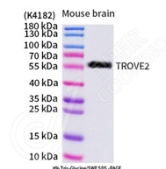
## 背景

TROVE2, also named as RO60 or RoRNP, is a 538 amino acid protein, which is localized in cytoplasmic mRNP granules containing untranslated mRNAs. TROVE2 as a RNA-binding protein that binds to misfolded non-coding RNAs, pre-5S rRNA, and several small cytoplasmic RNA molecules known as Y RNAs. TROVE2 may stabilize some of these RNAs and protect them from degradation. TROVE2 binds to endogenous Alu retroelements which are induced by type I IFN and stimulate proinflammatory cytokine secretion.

## 储存条件

**储存条件：**自收到之日起 -20°C下储存一年，避免反复冻融。  
**储存缓冲液：**含 0.15% ProClin300 防腐剂, 100 µg/mL 牛血清白蛋白和 50%甘油的磷酸盐缓冲液。

## 图像



WB 检测 TROVE2/SS-A 蛋白(货号 K1341595).  
 样品: 经 RIPA 裂解液(货号 KSG2002)处理的蛋白质.  
 封闭: 3%脱脂牛奶(货号 KSGC310001)溶于 TBST 溶液,  
 室温孵育 1 小时.  
 一抗: 1: 1000 稀释, 4°C 孵育过夜.  
 二抗: HRP 标记山羊抗兔 IgG (H+L) (货号 KB69909), 1:  
 5000 稀释, 室温孵育 1 小时.

For Research Use Only!

Ver. No.: V1-202603