

Anti-Phospho-EGF Receptor (Y1172) 兔多克隆抗体

K1342597 -20°C


产品信息

蛋白质全称	表皮生长因子受体
别名	ADGRE1, Adhesion G protein-coupled receptor E1, EGF like module receptor 1, EMR1, EMR1 hormone receptor, EGF Receptor, P-EGFR
免疫原	KLH 偶联的人 EGF Receptor (Tyr1172)合成磷酸肽
Uniprot ID	P00533
抗体亚型	IgG
纯化方式	亲和纯化
预测分子量 / 观测分子量	134 kDa / 175 kDa

应用

WB 免疫印迹

物种：人
 稀释比：1: 300-1: 600
 阳性样品：A549 细胞

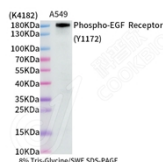
背景

EMR1 (EGF-like module containing mucin-like hormone receptor 1), also known as Adhesion G protein-coupled receptor E1 (ADGRE1), is a surface receptor with seven transmembrane segments that belongs to the EGF-7-transmembrane family of G protein-coupled receptors (PMID: 14647991, 7601460). EMR1 expression is restricted to eosinophilic granulocytes, where expression is overlapping with the eotaxin receptor CCR3 and the immunoglobulin-like lectin Siglec-8. Absence on other leukocytes, including basophils, implies that EMR1 is a highly specific marker for eosinophils in humans and may be used as a novel therapeutic target for eosinophilic disorders.

储存条件

储存条件：自收到之日起 -20°C下储存一年，避免反复冻融。
储存缓冲液：含 0.15% ProClin300 防腐剂, 100 μg/mL 牛血清白蛋白和 50%甘油的磷酸盐缓冲液。

图像



WB 检测 EGF Receptor (Y1172)蛋白(货号 K1342597).
 样品: 经 RIPA 裂解液(货号 KSG2002)处理的蛋白质.
 封闭: 3%脱脂牛奶(货号 KSGC310001)溶于 TBST 溶液,
 室温孵育 1 小时.
 一抗: 1: 300 稀释, 4°C 孵育过夜.
 二抗: HRP 标记山羊抗兔 IgG (H+L) (货号 KB69909), 1:
 5000 稀释, 室温孵育 1 小时.

For Research Use Only!
Ver. No.: V1-202603