

Anti-SEC14L2/TAP 兔多克隆抗体

K1342456 -20°C



产品信息

蛋白质全称	SEC14 样蛋白 2
别名	C22orf6, KIAA1186, KIAA1658, SPF, TAP, TAP1, SEC14L2
免疫原	小鼠 SEC14L2/TAP 重组蛋白
Uniprot ID	Q99J08
抗体亚型	IgG
纯化方式	亲和纯化
预测分子量 / 观测分子量	46 kDa / 45 kDa

应用

WB 免疫印迹

物种: 人, 小鼠, 大鼠

稀释比: 1: 500-1: 1500

阳性样品: 肝

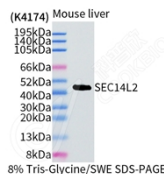
背景

Carrier protein. Binds to some hydrophobic molecules and promotes their transfer between the different cellular sites. Binds with high affinity to alpha-tocopherol. Also binds with a weaker affinity to other tocopherols and to tocotrienols. May have a transcriptional activatory activity via its association with alpha-tocopherol. Probably recognizes and binds some squalene structure, suggesting that it may regulate cholesterol biosynthesis by increasing the transfer of squalene to a metabolic active pool in the cell (By similarity).

储存条件

储存条件: 自收到之日起 -20°C下储存一年, 避免反复冻融。
储存缓冲液: 含 0.15% ProClin300 防腐剂, 100 µg/mL 牛血清白蛋白和 50%甘油的磷酸盐缓冲液。

图像



WB 检测 SEC14L2/TAP 蛋白(货号 K1342456).
 样品: 经 RIPA 裂解液(货号 KSG2002)处理的蛋白质.
 封闭: 3%脱脂牛奶(货号 KSGC310001)溶于 TBST 溶液,
 室温孵育 1 小时.
 一抗: 1: 1000 稀释, 4°C 孵育过夜.
 二抗: HRP 标记山羊抗兔 IgG (H+L) (货号 KB69909), 1:
 5000 稀释, 室温孵育 1 小时.

For Research Use Only!

Ver. No.: V1-202603