

Anti-MED28/EG1 兔多克隆抗体

K1342543 -20°C



产品信息

蛋白质全称	中介复合体亚基 28
别名	1500003D12Rik, EG1, Endothelial derived protein 1, magicin, MED28, mediator complex subunit 28, Tumor angiogenesis marker EG 1
免疫原	小鼠 MED28/EG1 重组蛋白
Uniprot ID	Q920D3
抗体亚型	IgG
纯化方式	亲和纯化
预测分子量 / 观测分子量	20 kDa / 24 kDa

应用

WB 免疫印迹

物种: 小鼠, 大鼠

稀释比: 1: 700-1: 1400

阳性样品: 脑

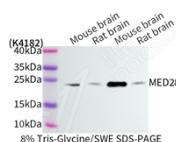
背景

Component of the Mediator complex, a coactivator involved in the regulated transcription of nearly all RNA polymerase II-dependent genes. Mediator functions as a bridge to convey information from gene-specific regulatory proteins to the basal RNA polymerase II transcription machinery. Mediator is recruited to promoters by direct interactions with regulatory proteins and serves as a scaffold for the assembly of a functional preinitiation complex with RNA polymerase II and the general transcription factors. May be part of a complex containing NF2/merlin that participates in cellular signaling to the actin cytoskeleton downstream of tyrosine kinase signaling pathways (By similarity).

储存条件

储存条件: 自收到之日起 -20°C下储存一年, 避免反复冻融。
储存缓冲液: 含 0.15% ProClin300 防腐剂, 100 µg/mL 牛血清白蛋白和 50%甘油的磷酸盐缓冲液。

图像



WB 检测 MED28/EG1 蛋白(货号 K1342543).
 样品: 经 RIPA 裂解液(货号 KSG2002)处理的蛋白质.
 封闭: 3%脱脂牛奶(货号 KSGC310001)溶于 TBST 溶液,
 室温孵育 1 小时.
 一抗: 1: 1000 稀释, 4°C 孵育过夜.
 二抗: HRP 标记山羊抗兔 IgG (H+L) (货号 KB69909), 1:
 5000 稀释, 室温孵育 1 小时.

For Research Use Only!

Ver. No.: V1-202603