

Anti-IPO5 兔多克隆抗体

K1342567 -20°C



产品信息

蛋白质全称	Importin-5 蛋白
别名	DKFZp686O1576, FLJ43041, IMB3, Imp5, importin 5, Importin subunit beta 3, IPO5, Karyopherin beta 3, KPMB3, Ran binding protein 5, RANBP5
免疫原	小鼠 IPO5 重组蛋白
Uniprot ID	Q8BKCS
抗体亚型	IgG
纯化方式	亲和纯化
预测分子量 / 观测分子量	124 kDa / 124 kDa

应用

WB 免疫印迹

物种: 人, 小鼠, 大鼠

稀释比: 1: 700-1: 1400

阳性样品: 睾丸

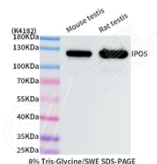
背景

IPO5 is a member of the importin beta family. Structurally, the protein adopts the shape of a right-hand solenoid and is composed of 24 HEAT repeats. IPO5 facilitates cytoplasmic polyadenylation element-binding protein CPEB3 translocation by binding to the RRM1 motif of CPEB3 in neurons. NMDAR signaling increases RanBP1 expression and reduces the level of cytoplasmic GTP-bound Ran. These changes enhance CPEB3-IPO5 interaction, which consequently accelerates the nuclear import of CPEB3 and promotes its nuclear function.

储存条件

储存条件: 自收到之日起 -20°C下储存一年, 避免反复冻融。
储存缓冲液: 含 0.15% ProClin300 防腐剂, 100 µg/mL 牛血清白蛋白和 50%甘油的磷酸盐缓冲液。

图像



WB 检测 IPO5 蛋白(货号 K1342567).
 样品: 经 RIPA 裂解液(货号 KSG2002)处理的蛋白质.
 封闭: 3%脱脂牛奶(货号 KSGC310001)溶于 TBST 溶液,
 室温孵育 1 小时.
 一抗: 1: 1000 稀释, 4°C 孵育过夜.
 二抗: HRP 标记山羊抗兔 IgG (H+L) (货号 KB69909), 1:
 5000 稀释, 室温孵育 1 小时.

For Research Use Only!

Ver. No.: V1-202603