

# Anti-PDLIM7 兔多克隆抗体

K1342729 -20°C



## 产品信息

蛋白质全称	PDZL-IM 结构域蛋白 7
别名	ENIGMA, LIM mineralization protein, LMP, PDLIM7, PDZ and LIM domain 7 (enigma), PDZ and LIM domain protein 7
免疫原	小鼠 PDLIM7 重组蛋白
Uniprot ID	Q3TJD7
抗体亚型	IgG
纯化方式	亲和纯化
预测分子量 / 观测分子量	50 kDa / 43 kDa

## 应用

### WB 免疫印迹

物种：小鼠，大鼠

稀释比：1: 3000-1: 5000

阳性样品：骨骼肌

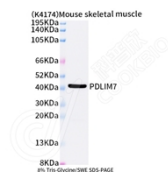
## 背景

May function as a scaffold on which the coordinated assembly of proteins can occur. May play a role as an adapter that, via its PDZ domain, localizes LIM-binding proteins to actin filaments of both skeletal muscle and nonmuscle tissues. Involved in both of the two fundamental mechanisms of bone formation, direct bone formation (e.g. embryonic flat bones mandible and cranium), and endochondral bone formation (e.g. embryonic long bone development). Plays a role during fracture repair. Involved in BMP6 signaling pathway (By similarity).

## 储存条件

**储存条件：**自收到之日起 -20°C下储存一年，避免反复冻融。  
**储存缓冲液：**含 0.15% ProClin300 防腐剂, 100 µg/mL 牛血清白蛋白和 50%甘油的磷酸盐缓冲液。

## 图像



WB 检测 PDLIM7 蛋白(货号 K1342729).  
 样品: 经 RIPA 裂解液(货号 KSG2002)处理的蛋白质.  
 封闭: 3%脱脂牛奶(货号 KSGC310001)溶于 TBST 溶液,  
 室温孵育 1 小时.  
 一抗: 1: 5000 稀释, 4°C 孵育过夜.  
 二抗: HRP 标记山羊抗兔 IgG (H+L) (货号 KB69909), 1:  
 5000 稀释, 室温孵育 1 小时.

For Research Use Only!

Ver. No.: V1-202603