

Anti-SHARPIN 兔多克隆抗体

K1343332 -20°C



产品信息

蛋白质全称	Sharpin 蛋白
别名	hSIPL1, SHARPIN, SIPL1
免疫原	小鼠 SHARPIN 重组蛋白
Uniprot ID	Q91WA6
抗体亚型	IgG
纯化方式	亲和纯化
预测分子量 / 观测分子量	40 kDa / 38 kDa

应用

WB 免疫印迹

物种: 小鼠, 大鼠

稀释比: 1: 500-1: 1000

阳性样品: 骨骼肌

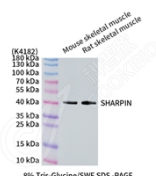
背景

Component of the LUBAC complex which conjugates linear polyubiquitin chains in a head-to-tail manner to substrates and plays a key role in NF-kappa-B activation and regulation of inflammation. LUBAC conjugates linear polyubiquitin to IKK β and RIPK1 and is involved in activation of the canonical NF-kappa-B and the JNK signaling pathways. Linear ubiquitination mediated by the LUBAC complex interferes with TNF-induced cell death and thereby prevents inflammation. LUBAC is recruited to the TNF-R1 signaling complex (TNF-RSC) following polyubiquitination of TNF-RSC components by BIRC2 and/or BIRC3 and to conjugate linear polyubiquitin to IKK β and possibly other components contributing to the stability of the complex. Together with OTULIN, the LUBAC complex regulates the canonical Wnt signaling during angiogenesis.

储存条件

储存条件: 自收到之日起 -20°C下储存一年, 避免反复冻融。
储存缓冲液: 含 0.15% ProClin300 防腐剂, 100 μ g/mL 牛血清白蛋白和 50%甘油的磷酸盐缓冲液。

图像



WB 检测 SHARPIN 蛋白(货号 K1343332).
 样品: 经 RIPA 裂解液(货号 KSG2002)处理的蛋白质.
 封闭: 3%脱脂牛奶(货号 KSGC310001)溶于 TBST 溶液, 室温孵育 1 小时.
 一抗: 1: 1000 稀释, 4°C 孵育过夜.
 二抗: HRP 标记山羊抗兔 IgG (H+L) (货号 KB69909), 1: 5000 稀释, 室温孵育 1 小时.

For Research Use Only!

Ver. No.: V1-202603