

# Anti-RNase L 兔多克隆抗体

**K1343989** -20°C



## 产品信息

蛋白质全称	2-5A 依赖核糖核酸酶
别名	2-5A dependent ribonuclease, 2-5A dependent RNase, PRCA1, Ribonuclease 4, Ribonuclease L, RNase L, RNASEL, RNS4
免疫原	KLH 偶联的小鼠 RNase L 合成肽
Uniprot ID	Q05921
抗体亚型	IgG
纯化方式	亲和纯化
预测分子量 / 观测分子量	83 kDa / 80 kDa

## 应用

### WB 免疫印迹

物种: 人  
 稀释比: 1: 400-1: 800  
 阳性样品: 293T 细胞

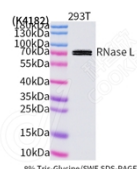
## 背景

Endoribonuclease that functions in the interferon (IFN) antiviral response. In INF treated and virus infected cells, RNASEL probably mediates its antiviral effects through a combination of direct cleavage of single-stranded viral RNAs, inhibition of protein synthesis through the degradation of rRNA, induction of apoptosis, and induction of other antiviral genes. RNASEL mediated apoptosis is the result of a JNK-dependent stress-response pathway leading to cytochrome c release from mitochondria and caspase-dependent apoptosis. Therefore, activation of RNASEL could lead to elimination of virus infected cells under some circumstances.

## 储存条件

**储存条件:** 自收到之日起 -20°C下储存一年, 避免反复冻融。  
**储存缓冲液:** 含 0.15% ProClin300 防腐剂, 100 µg/mL 牛血清白蛋白和 50%甘油的磷酸盐缓冲液。

## 图像



WB 检测 RNase L 蛋白(货号 K1343989).  
 样品: 经 RIPA 裂解液(货号 KSG2002)处理的蛋白质.  
 封闭: 3%脱脂牛奶(货号 KSGC310001)溶于 TBST 溶液,  
 室温孵育 1 小时.  
 一抗: 1: 500 稀释, 4°C 孵育过夜.  
 二抗: HRP 标记山羊抗兔 IgG (H+L) (货号 KB69909), 1:  
 5000 稀释, 室温孵育 1 小时.

**For Research Use Only!**

**Ver. No.: V1-202603**