

Anti-TULP3 兔多克隆抗体

K1343992 -20°C



产品信息

蛋白质全称	Tubby 相关蛋白 3
别名	tubby like protein 3, Tubby related protein 3, TUBL3, TULP3
免疫原	KLH 偶联的小鼠 TULP3 合成肽
Uniprot ID	O88413
抗体亚型	IgG
纯化方式	亲和纯化
预测分子量 / 观测分子量	51 kDa / 55 kDa

应用

WB 免疫印迹

物种：小鼠，大鼠

稀释比：1: 500-1: 1000

阳性样品：肾

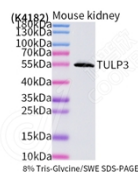
背景

Negative regulator of the Shh signaling transduction pathway: recruited to primary cilia via association with the IFT complex A (IFT-A) and is required for recruitment of G protein-coupled receptor GPR161 to cilia, a promoter of PKA-dependent basal repression machinery in Shh signaling. Binds to phosphorylated inositide (phosphoinositide) lipids. Both IFT-A- and phosphoinositide-binding properties are required to regulate ciliary G protein-coupled receptor trafficking. Not involved in ciliogenesis. During adipogenesis, regulates ciliary trafficking of FFAR4 in preadipocytes.

储存条件

储存条件：自收到之日起 -20°C下储存一年，避免反复冻融。
储存缓冲液：含 0.15% ProClin300 防腐剂, 100 µg/mL 牛血清白蛋白和 50%甘油的磷酸盐缓冲液。

图像



WB 检测 TULP3 蛋白(货号 K1343992).
 样品: 经 RIPA 裂解液(货号 KSG2002)处理的蛋白质.
 封闭: 3%脱脂牛奶(货号 KSGC310001)溶于 TBST 溶液,
 室温孵育 1 小时.
 一抗: 1: 1000 稀释, 4°C 孵育过夜.
 二抗: HRP 标记山羊抗兔 IgG (H+L) (货号 KB69909), 1:
 5000 稀释, 室温孵育 1 小时.

For Research Use Only!

Ver. No.: V1-202603