

Anti-Cysteine Dioxygenase CDO1 兔多克隆抗体

K1344031 -20°C


产品信息

蛋白质全称	1 型半胱氨酸双加氧酶
别名	CDO, CDO-I, CDO1, Cysteine dioxygenase type 1, cysteine dioxygenase, type I
免疫原	KLH 偶联的小鼠 Cysteine Dioxygenase CDO1 合成肽
Uniprot ID	P60334
抗体亚型	IgG
纯化方式	亲和纯化
预测分子量 / 观测分子量	23 kDa / 23 kDa

应用

WB 免疫印迹

物种：小鼠，大鼠

稀释比：1: 1500-1: 3000

阳性样品：脾

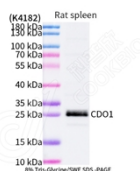
背景

DO1 (cysteine dioxygenase, type I) is a 200 amino acid protein that belongs to the cysteine dioxygenase family and is involved in organosulfur biosynthesis. Existing as a monomer and expressed at high levels in liver and placenta and at lower levels in brain, pancreas and heart, CDO1 functions as a dioxygenase that uses iron and zinc as cofactors to catalyze the conversion of L-cysteine and oxygen to 3-sulfinoalanine.

储存条件

储存条件：自收到之日起 -20°C下储存一年，避免反复冻融。
储存缓冲液：含 0.15% ProClin300 防腐剂, 100 μg/mL 牛血清白蛋白和 50%甘油的磷酸盐缓冲液。

图像



WB 检测 Cysteine Dioxygenase CDO1 蛋白(货号 K1344031).
 样品: 经 RIPA 裂解液(货号 KSG2002)处理的蛋白质.
 封闭: 3%脱脂牛奶(货号 KSGC310001)溶于 TBST 溶液, 室温孵育 1 小时.
 一抗: 1: 2000 稀释, 4°C 孵育过夜.
 二抗: HRP 标记山羊抗兔 IgG (H+L) (货号 KB69909), 1: 5000 稀释, 室温孵育 1 小时.

For Research Use Only!
Ver. No.: V1-202603