

Anti-VPS35 兔多克隆抗体

K1344043 -20°C



产品信息

蛋白质全称	液泡分选关联蛋白 35
别名	hVPS35, Maternal embryonic 3, MEM3, Vesicle protein sorting 35, VPS35
免疫原	KLH 偶联的小鼠 VPS35 合成肽
Uniprot ID	Q9EQH3
抗体亚型	IgG
纯化方式	亲和纯化
预测分子量 / 观测分子量	92 kDa / 95 kDa

应用

WB 免疫印迹

物种: 小鼠, 大鼠

稀释比: 1: 1000-1: 2000

阳性样品: 脾

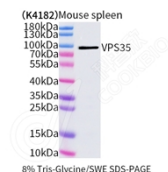
背景

Acts as component of the retromer cargo-selective complex (CSC). The CSC is believed to be the core functional component of retromer or respective retromer complex variants acting to prevent missorting of selected transmembrane cargo proteins into the lysosomal degradation pathway. The recruitment of the CSC to the endosomal membrane involves RAB7A and SNX3. The CSC seems to associate with the cytoplasmic domain of cargo proteins predominantly via VPS35; however, these interactions seem to be of low affinity and retromer SNX proteins may also contribute to cargo selectivity thus questioning the classical function of the CSC.

储存条件

储存条件: 自收到之日起 -20°C下储存一年, 避免反复冻融。
储存缓冲液: 含 0.15% ProClin300 防腐剂, 100 µg/mL 牛血清白蛋白和 50%甘油的磷酸盐缓冲液。

图像



WB 检测 VPS35 蛋白(货号 K1344043).
 样品: 经 RIPA 裂解液(货号 KSG2002)处理的蛋白质.
 封闭: 3%脱脂牛奶(货号 KSGC310001)溶于 TBST 溶液,
 室温孵育 1 小时.
 一抗: 1: 1000 稀释, 4°C 孵育过夜.
 二抗: HRP 标记山羊抗兔 IgG (H+L) (货号 KB69909), 1:
 5000 稀释, 室温孵育 1 小时.

For Research Use Only!

Ver. No.: V1-202603