

# Anti-Rpa1 兔多克隆抗体

K1344049 -20°C



## 产品信息

蛋白质全称	复制蛋白 A 70kDa DNA 结合亚基
别名	RF-A protein 1, RP-A p70, Replication factor A protein 1, Rpa1
免疫原	KLH 偶联的小鼠 Rpa1 合成肽
Uniprot ID	Q8VEE4
抗体亚型	IgG
纯化方式	亲和纯化
亚细胞定位	细胞核
预测分子量 / 观测分子量	69 kDa / 70 kDa

## 应用

### WB 免疫印迹

物种: 人  
 稀释比: 1: 500-1: 1000  
 阳性样品:

### IHC/IF 免疫组织化学/免疫荧光

物种: 大鼠  
 稀释比: 1: 500-1: 1500  
 阳性样品: 肾, 脊髓

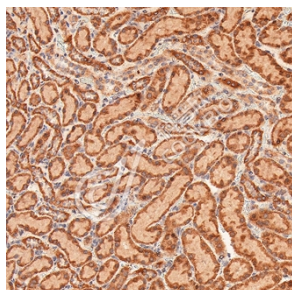
## 背景

As part of the heterotrimeric replication protein A complex (RPA/RP-A), binds and stabilizes single-stranded DNA intermediates, that form during DNA replication or upon DNA stress. It prevents their reannealing and in parallel, recruits and activates different proteins and complexes involved in DNA metabolism. Thereby, it plays an essential role both in DNA replication and the cellular response to DNA damage. In the cellular response to DNA damage, the RPA complex controls DNA repair and DNA damage checkpoint activation. Through recruitment of ATRIP activates the ATR kinase a master regulator of the DNA damage response. It is required for the recruitment of the DNA double-strand break repair factors RAD51 and RAD52 to chromatin in response to DNA damage.

## 储存条件

**储存条件:** 自收到之日起 -20°C下储存一年, 避免反复冻融。  
**储存缓冲液:** 含 0.15% ProClin300 防腐剂, 100 µg/mL 牛血清白蛋白和 50%甘油的磷酸盐缓冲液。

## 图像



IHC 检测 Rpa1 蛋白(货号 K1344049).  
 样品: 大鼠肾, 4%多聚甲醛 (货号 KSG1101) 固定 12-24 小时.  
 抗原修复: 柠檬酸抗原修复液(干粉, pH 6.0) (KSG1201), 98°C, 20 分钟.  
 一抗: 1: 1000 稀释, 4°C 孵育过夜.  
 二抗: S-vision 免疫组化多聚二抗(山羊抗兔), 即用型 (货号 KB3906), 室温孵育 20 分钟.



IHC 检测 Rpa1 蛋白(货号 K1344049).  
 样品: 大鼠脊髓, 4%多聚甲醛 (货号 KSG1101) 固定 12-24 小时.  
 抗原修复: 柠檬酸抗原修复液(干粉, pH 6.0) (KSG1201), 98°C, 20 分钟.  
 一抗: 1: 1000 稀释, 4°C 孵育过夜.  
 二抗: S-vision 免疫组化多聚二抗(山羊抗兔), 即用型 (货号 KB3906), 室温孵育 20 分钟.

For Research Use Only!

Ver. No.: V1-202603