

Anti-CPSF6 兔多克隆抗体

K1344604 -20°C



产品信息

蛋白质全称	剪切与多聚腺苷酸化特异性因子亚基 6
别名	CFIM, CFIM68, CPSF 68 kDa subunit, CPSF6, HPBR11 4, HPBR11 7, Protein HPBR11 4/7
免疫原	KLH 偶联的小鼠 CPSF6 合成肽
Uniprot ID	Q6NVF9
抗体亚型	IgG
纯化方式	亲和纯化
预测分子量 / 观测分子量	59 kDa / 68 kDa

应用

WB 免疫印迹

物种：人
 稀释比：1: 1000-1: 2000
 阳性样品：293T 细胞

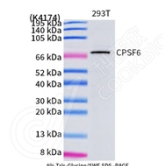
背景

Component of the cleavage factor Im (CFIm) complex that functions as an activator of the pre-mRNA 3'-end cleavage and polyadenylation processing required for the maturation of pre-mRNA into functional mRNAs. CFIm contributes to the recruitment of multiprotein complexes on specific sequences on the pre-mRNA 3'-end, so called cleavage and polyadenylation signals (pA signals). Most pre-mRNAs contain multiple pA signals, resulting in alternative cleavage and polyadenylation (APA) producing mRNAs with variable 3'-end formation. The CFIm complex acts as a key regulator of cleavage and polyadenylation site choice during APA through its binding to 5'-UGUA-3' elements localized in the 3'-untranslated region (UTR) for a huge number of pre-mRNAs.

储存条件

储存条件：自收到之日起 -20°C下储存一年，避免反复冻融。
储存缓冲液：含 0.15% ProClin300 防腐剂, 100 μg/mL 牛血清白蛋白和 50%甘油的磷酸盐缓冲液。

图像



WB 检测 CPSF6 蛋白(货号 K1344604).
 样品: 经 RIPA 裂解液(货号 KSG2002)处理的蛋白质.
 封闭: 3%脱脂牛奶(货号 KSGC310001)溶于 TBST 溶液,
 室温孵育 1 小时.
 一抗: 1: 1000 稀释, 4°C 孵育过夜.
 二抗: HRP 标记山羊抗兔 IgG (H+L) (货号 KB69909), 1:
 5000 稀释, 室温孵育 1 小时.

For Research Use Only!

Ver. No.: V1-202603