

Anti-SLC1A6 兔多克隆抗体

K1344700 -20°C



产品信息

蛋白质全称	兴奋性氨基酸转运体 4
别名	EAAT4
免疫原	KLH 偶联的小鼠 SLC1A6 合成肽
Uniprot ID	O35544
抗体亚型	IgG
纯化方式	亲和纯化
预测分子量 / 观测分子量	61 kDa / 70 kDa

应用

WB 免疫印迹

物种：小鼠，大鼠

稀释比：1: 500-1: 1000

阳性样品：脑

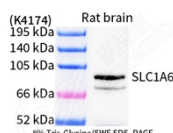
背景

Sodium-dependent, high-affinity amino acid transporter that mediates the uptake of L-glutamate and also L-aspartate and D-aspartate. Functions as a symporter that transports one amino acid molecule together with two or three Na⁽⁺⁾ ions and one proton, in parallel with the counter-transport of one K⁽⁺⁾ ion. Mediates Cl⁽⁻⁾ flux that is not coupled to amino acid transport; this avoids the accumulation of negative charges due to aspartate and Na⁽⁺⁾ symport. Plays a redundant role in the rapid removal of released glutamate from the synaptic cleft, which is essential for terminating the postsynaptic action of glutamate (Probable).

储存条件

储存条件：自收到之日起 -20°C下储存一年，避免反复冻融。
储存缓冲液：含 0.15% ProClin300 防腐剂, 100 μg/mL 牛血清白蛋白和 50%甘油的磷酸盐缓冲液。

图像



WB 检测 SLC1A6 蛋白(货号 K1344700).
 样品: 经 RIPA 裂解液(货号 KSG2002)处理的蛋白质.
 封闭: 3%脱脂牛奶(货号 KSGC310001)溶于 TBST 溶液,
 室温孵育 1 小时.
 一抗: 1: 1000 稀释, 4°C 孵育过夜.
 二抗: HRP 标记山羊抗兔 IgG (H+L) (货号 KB69909), 1:
 5000 稀释, 室温孵育 1 小时.

For Research Use Only!

Ver. No.: V1-202603