

Anti-Mammaglobin A 小鼠单克隆抗体

K236318 -20°C



产品信息

蛋白质全称	乳腺球蛋白-A
别名	hMAM, Mammaglobin 1, MGB1, SCGB2A2, UGB2
免疫原	人 Mammaglobin1 重组蛋白
Uniprot ID	Q13296
抗体亚型	IgG2a, κ
克隆号	4D12H11
纯化方式	亲和纯化
亚细胞定位	分泌型, 细胞质

应用

IHC/IF 免疫组织化学/免疫荧光

物种: 人
 稀释比: 1: 500-1: 1000
 阳性样品: 乳腺癌

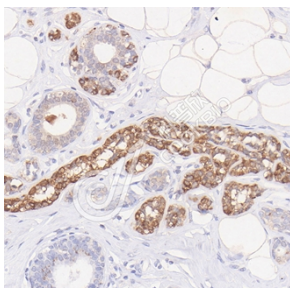
背景

Mammaglobin is a gene that is expressed almost exclusively in the normal breast epithelium and human breast cancer. It is a member of the secretoglobulin gene family and forms a heterodimer with lipophilin B. It has been suggested that mammaglobin may be a useful marker for breast cancer clinical research. Studies investigating the detection of mRNA by RT-PCR from circulating carcinoma cells in the peripheral blood of breast cancer patients have shown that mammaglobin is a highly specific marker and correlates with several prognostic factors, such as lymph node involvement.

储存条件

储存条件: 自收到之日起 -20°C下储存一年, 避免反复冻融。
储存缓冲液: 含 0.15% ProClin300 防腐剂, 100 μg/mL 牛血清白蛋白和 50%甘油的磷酸盐缓冲液。

图像



IHC 检测 Mammaglobin A 蛋白(货号 K236318).
 样品: 人乳腺癌, 4%多聚甲醛(货号 KSG1101) 固定 12-24 小时.
 抗原修复: 柠檬酸抗原修复液(干粉, pH 6.0) (KSG1201), 高压锅均匀喷气计 2 分钟.
 一抗: 1: 800 稀释, 4°C 孵育过夜.
 二抗: S-vision 免疫组化多聚二抗(山羊抗小鼠), 即用型(货号 KB3903), 室温孵育 20 分钟.

For Research Use Only!

Ver. No.: V1-202603