

Anti-CENPF 兔多克隆抗体

K1345174 -20°C



产品信息

蛋白质全称	着丝粒蛋白 F
别名	AH antigen, CENF, CENP F, CENPF, Centromere protein F, hcp 1, Kinetochores protein CENPF, Mitosin, PRO1779
免疫原	KLH 偶联的人 CENPF 合成肽
Uniprot ID	P49454
抗体亚型	IgG
纯化方式	亲和纯化
亚细胞定位	细胞质, 细胞核, 染色体

应用

IHC/IF 免疫组织化学/免疫荧光

物种: 人
 稀释比: 1: 500-1: 2000
 阳性样品: 结肠, 胃癌

ICC/IF 免疫细胞化学/免疫荧光

物种: 人, 小鼠
 稀释比: 1: 100-1: 600
 阳性样品:

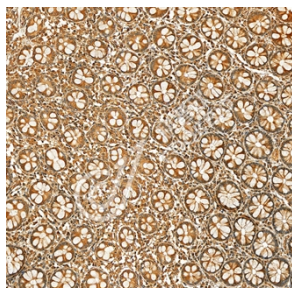
背景

Required for kinetochore function and chromosome segregation in mitosis. Required for kinetochore localization of dynein, LIS1, NDE1 and NDEL1. Regulates recycling of the plasma membrane by acting as a link between recycling vesicles and the microtubule network through its association with STX4 and SNAP25. Acts as a potential inhibitor of pocket protein-mediated cellular processes during development by regulating the activity of RB proteins during cell division and proliferation. May play a regulatory or permissive role in the normal embryonic cardiomyocyte cell cycle and in promoting continued mitosis in transformed, abnormally dividing neonatal cardiomyocytes. Interaction with RB directs embryonic stem cells toward a cardiac lineage.

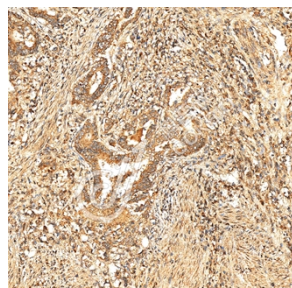
储存条件

储存条件: 自收到之日起 -20°C下储存一年, 避免反复冻融。
储存缓冲液: 含 0.15% ProClin300 防腐剂, 100 µg/mL 牛血清白蛋白和 50%甘油的磷酸盐缓冲液。

图像



IHC 检测 CENPF 蛋白(货号 K1345174).
 样品: 人结肠, 4%多聚甲醛 (货号 KSG1101) 固定 12-24 小时.
 抗原修复: Tris-EDTA 抗原修复液(pH 9.0) (KSG1203), 98°C, 20 分钟.
 一抗: 1: 1300 稀释, 4°C 孵育过夜.
 二抗: S-vision 免疫组化多聚二抗(山羊抗兔),即用型 (货号 KB3906), 室温孵育 20 分钟.



IHC 检测 CENPF 蛋白(货号 K1345174).
 样品: 人胃癌, 4%多聚甲醛 (货号 KSG1101) 固定 12-24 小时.
 抗原修复: Tris-EDTA 抗原修复液(pH 9.0) (KSG1203), 98°C, 20 分钟.
 一抗: 1: 1300 稀释, 4°C 孵育过夜.
 二抗: S-vision 免疫组化多聚二抗(山羊抗兔),即用型 (货号 KB3906), 室温孵育 20 分钟.

For Research Use Only!

Ver. No.: V1-202603