

# Anti-IST1 兔多克隆抗体

K1345246 -20°C



## 产品信息

蛋白质全称	IST1 同源蛋白
别名	hIST1, IST1 homolog, KIAA0174, OLC1
免疫原	KLH 偶联的小鼠 IST1 合成肽
Uniprot ID	Q9CX00
抗体亚型	IgG
纯化方式	亲和纯化
预测分子量 / 观测分子量	39 kDa / 42 kDa

## 应用

### WB 免疫印迹

物种：人，小鼠，大鼠

稀释比：1: 300-1: 600

阳性样品：肺

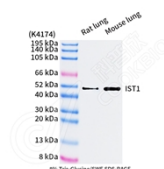
## 背景

ESCRT-III-like protein involved in specific functions of the ESCRT machinery. Is required for efficient abscission during cytokinesis, but not for HIV-1 budding. The involvement in the MVB pathway is not established. Involved in recruiting VPS4A and/or VPS4B to the midbody of dividing cells. During late anaphase, involved in nuclear envelope reassembly and mitotic spindle disassembly together with the ESCRT-III complex: IST1 acts by mediating the recruitment of SPAST to the nuclear membrane, leading to microtubule severing. Regulates early endosomal tubulation together with the ESCRT-III complex by mediating the recruitment of SPAST.

## 储存条件

**储存条件：**自收到之日起 -20°C下储存一年，避免反复冻融。  
**储存缓冲液：**含 0.15% ProClin300 防腐剂, 100 μg/mL 牛血清白蛋白和 50%甘油的磷酸盐缓冲液。

## 图像



WB 检测 IST1 蛋白(货号 K1345246).  
 样品: 经 RIPA 裂解液(货号 KSG2002)处理的蛋白质.  
 封闭: 3%脱脂牛奶(货号 KSGC310001)溶于 TBST 溶液,  
 室温孵育 1 小时.  
 一抗: 1: 300 稀释, 4°C 孵育过夜.  
 二抗: HRP 标记山羊抗兔 IgG (H+L) (货号 KB69909), 1:  
 5000 稀释, 室温孵育 1 小时.

For Research Use Only!

Ver. No.: V1-202603