

# Anti-HMBOX1 兔多克隆抗体

K1345276 -20°C



## 产品信息

蛋白质全称	含同源盒蛋白 1
别名	HMBOX1, HNF1LA, homeobox containing 1, Homeobox containing protein 1, PBHNF
免疫原	KLH 偶联的小鼠 HMBOX1 合成肽
Uniprot ID	Q8BJA3
抗体亚型	IgG
纯化方式	亲和纯化
预测分子量 / 观测分子量	47 kDa / 47 kDa

## 应用

### WB 免疫印迹

物种：小鼠，大鼠

稀释比：1: 1000-1: 2000

阳性样品：脑

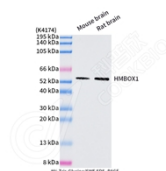
## 背景

Binds directly to 5'-TTAGGG-3' repeats in telomeric DNA (By similarity). Associates with the telomerase complex at sites of active telomere processing and positively regulates telomere elongation (By similarity). Important for TERT binding to chromatin, indicating a role in recruitment of the telomerase complex to telomeres. Also plays a role in the alternative lengthening of telomeres (ALT) pathway in telomerase-negative cells where it promotes formation and/or maintenance of ALT-associated promyelocytic leukemia bodies (APBs) (By similarity). Enhances formation of telomere C-circles in ALT cells, suggesting a possible role in telomere recombination (By similarity). Might also be involved in the DNA damage response at telomeres (By similarity).

## 储存条件

**储存条件：**自收到之日起 -20°C下储存一年，避免反复冻融。  
**储存缓冲液：**含 0.15% ProClin300 防腐剂, 100 µg/mL 牛血清白蛋白和 50%甘油的磷酸盐缓冲液。

## 图像



WB 检测 HMBOX1 蛋白(货号 K1345276).  
 样品: 经 RIPA 裂解液(货号 KSG2002)处理的蛋白质.  
 封闭: 3%脱脂牛奶(货号 KSGC310001)溶于 TBST 溶液,  
 室温孵育 1 小时.  
 一抗: 1: 1000 稀释, 4°C 孵育过夜.  
 二抗: HRP 标记山羊抗兔 IgG (H+L) (货号 KB69909), 1:  
 5000 稀释, 室温孵育 1 小时.

For Research Use Only!

Ver. No.: V1-202603