

# Anti-Integrin beta 1 兔多克隆抗体

K1345519 -20°C



## 产品信息

蛋白质全称	整合素β1
别名	Integrin beta-1, Fibronectin receptor subunit beta, Glycoprotein IIa, GPIIA, VLA-4 subunit beta, CD29, ITGB1, FNRB, MDF2, MSK12
免疫原	人 Integrin beta 1 重组蛋白
Uniprot ID	P05556
抗体亚型	IgG
纯化方式	亲和纯化
亚细胞定位	细胞膜
预测分子量 / 观测分子量	88 kDa / 100-130 kDa

## 应用

### WB 免疫印迹

物种: 人, 小鼠  
 稀释比: 1: 300-1: 600  
 阳性样品:

### IHC/IF 免疫组织化学/免疫荧光

物种: 人  
 稀释比: 1: 300-1: 600  
 阳性样品: 胎盘, 扁桃体

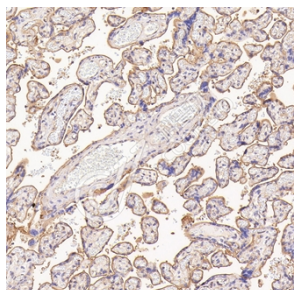
## 背景

Integrin beta-1 (ITGB1), also named as CD29, is a 130 kDa single chain type I glycoprotein that is expressed in a heterodimeric complex with one of six distinct  $\alpha$  subunits, comprising the very late activation antigen (VLA) subfamily of adhesion receptors. It is one of the essential surface molecules expressed on human MSC from bone marrow and other sources. The  $\beta$ 1 subunit is also broadly expressed on lymphocytes and monocyte, weakly expressed on granulocytes, and not expressed on erythrocytes. These receptors are involved in a variety of cell-cell and cell-matrix interactions.

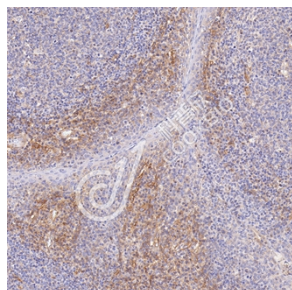
## 储存条件

**储存条件:** 自收到之日起 -20°C下储存一年, 避免反复冻融。  
**储存缓冲液:** 含 0.15% ProClin300 防腐剂, 100  $\mu$ g/mL 牛血清白蛋白和 50%甘油的磷酸盐缓冲液。

## 图像



IHC 检测 Integrin beta 1 蛋白(货号 K1345519).  
 样品: 人胎盘, 4%多聚甲醛(货号 KSG1101) 固定 12-24 小时.  
 抗原修复: 柠檬酸抗原修复液(干粉, pH 6.0) (KSG1201), 98°C, 20 分钟.  
 一抗: 1: 500 稀释, 4°C 孵育过夜.  
 二抗: S-vision 免疫组化多聚二抗(山羊抗兔), 即用型 (货号 KB3906), 室温孵育 20 分钟.



IHC 检测 Integrin beta 1 蛋白(货号 K1345519).  
 样品: 人扁桃体, 4%多聚甲醛(货号 KSG1101) 固定 12-24 小时.  
 抗原修复: 柠檬酸抗原修复液(干粉, pH 6.0) (KSG1201), 98°C, 20 分钟.  
 一抗: 1: 500 稀释, 4°C 孵育过夜.  
 二抗: S-vision 免疫组化多聚二抗(山羊抗兔), 即用型 (货号 KB3906), 室温孵育 20 分钟.

For Research Use Only!

Ver. No.: V1-202603